



SPPIF



# Operational **Guidelines**

Special Programme for Promotion of  
Integrated Farming



## Contents

Abbreviation .....	7
1. Background .....	10
2. Objectives .....	10
3.Cluster Approach .....	10
4.Planning Process .....	11
5.Components and Convergence .....	12
6. Brief Description of Components .....	19
6.a Agriculture Component.....	19
6.a.1 Crop Diversification.....	19
6.a.2 PVT (Participatory Varietal Trail) .....	19
6.a.3 Seed Center/Seed Production.....	19
6.a.4 Support for Liquid Manure .....	19
6.a.5 Custom Hiring Centre .....	20
6.a.6 Post Harvest and Processing Units.....	20
6.a.7 Support to Farmers Producer Organization & Institution building.....	20
6.a.8 IEC material, Video Documentation & Awareness .....	20
6.b Horticulture Component .....	20
6.b.1 Support for Micro Irrigation System.....	20
6.b.2 Support for Trellis Cultivation.....	21
6.b.3 Support for Vegetable Cultivation, Supply of seed /sapling, Fertilizer, Bio inputs etc..	21
6.b.4 Promotion of Agroforestry (Adarsha Bagicha).....	21
6.b.5 Producer Group (PG) Promotion .....	21
6.c Livestock Component .....	22
6.c.1 Vaccination .....	22
6.c.2 Goat Shelter Construction .....	22
<b>6.c.3 Support for Establishment of Indigenous Chicks Production Unit. ....</b>	<b>22</b>
6.c.4Support for Poultry Vaccine:(One time support) .....	22
6.c.5 Establishment of commercial goat rearing unit through WSHG .....	23
6.c.6 Livelihood support to farmers through Duckery Farming: .....	23
6.c.7 Backyard Azolla cultivation for livestock consumption:.....	23
6.c.8 Crop residue enrichment: .....	23
6.c.9.Commercial enterprises through Broiler Farming: .....	23
6.c.10 Perennial fodder cultivation: .....	23
6. C.11. Promotion of Seasonal fodder cultivation. ....	24
6.c.12 Promotion of Native livestock breeds (Characterization, Conservation, & livelihood development): .....	24
6.d Fishery Component.....	24

6.d.1 Support for Farm Pond.....	24
6.d.2 Support for quality of fish seed supply and distribution.....	24
6.d.3 Support for quality of fish seed supply stocking .....	24
6.d.4 Support for establishment of Fish Nano Fish Feed mixture unit .....	24
6.d.5 Support for establishment of Integrated Fish Farming System .....	25
6.d.6 Support for Promotion of Indigenous Fish Species Culture .....	25
6.d.7 Harvesting of marketable fish.....	25
6.e Innovation .....	25
6.f Training & Exposure visit .....	25
6.g Support for Facilitating Agency Cost .....	26
6.h Centralised Capacity Building and Meetings .....	26
6.I District Project Management Units Cost .....	26
6.J State Project Management Units Cost.....	26
6.k WSHG.....	26
7. Role and Responsibilities.....	27
7.1 High Power Committee on Integrated Farming:.....	27
7.2 State Level Coordination and Implementation Committee .....	27
7.3 Department of Agriculture & Farmers' Empowerment.....	28
7.4 State Level Technical Committee on Integrated Farming Systems.....	28
7.5 Directorate of Agriculture & Food Production, Odisha.....	29
7.6 DSC&WD /DoH/ DAHVS/ DoF /DoST/ OLM & other Directorates .....	29
7.7 State Project Management Unit (SPMU).....	29
7.8 State Professional Agency: .....	30
7.9 Research & Evaluation Agency .....	30
8. District Level .....	30
8.1 District IFS Committee .....	31
8.2 District IFS EC Committee.....	31
8.3 Chief District Agriculture Officer (CDAO cum PD ATMA).....	32
8.4 DRDA/DFO/DDH/CDVO/DFO (Fisheries)/PD Watershed/DSWO .....	32
9. Block Level.....	32
9.1 BTT Committee .....	32
9.2. Facilitating Agency (FA) .....	33
9.3. Community Resource Person (CRP) .....	33
9.3.a Selection Process of CRP:.....	34
9.3.b Mode of Payment of CRP:.....	34
9.4. Farmers Producer Organization (FPO/WSHGs).....	34
9.5. Women Self Help Group- Service Provider .....	35
10. Implementation strategy.....	36
10.1 Process of selection of beneficiary .....	36
11. Project Details .....	38
11.1 Capacity Building (As per the approved cost norms of Extension Reforms Scheme) ....	38
12. Process of selection of Facilitating Agency & Farmers Producer Groups .....	38

12.1 Process Steps for selection of NGOs as Facilitating Agency (FA) .....	38
12.2 Process Steps for Selection of FPO/WSHG Federation .....	39
12.3 Process of Gram panchayat (GP) Selection. ....	39
12.4 Staffing Position at FA and FPO level.....	39
13. Financial Protocols: Funds Release Mechanism.....	40
13.1 State level.....	40
13.2 FPO level: .....	41
13.3 UC Submission at FA/FPO level: .....	41
13.4 UC Submission at State Level: .....	42
13.5 Banking Arrangement:.....	42
<b>14.Fund Flow Diagram.....</b>	<b>43</b>
Indicative Budget Break up of Activities.....	43
A -Agriculture .....	43
1. Crop Diversification / Intercropping, Methods.....	43
2. PVT/ Mass Selection.....	44
3. Establishment of Mini Seed Centre .....	45
..... <b>Error! Bookmark not defined.</b>	
4. Seed Production .....	46
5. Support for liquid Manure .....	47
6. Bund Plantations .....	47
7. Support for Establishing Custom Hiring Centre.....	47
8. Support for Establishment of Processing Units .....	48
9. Support for Strengthen the Block level FPO .....	48
10. Development & Printing of IEC Materials .....	48
11. Video Documentation of Programme- Cases Studies.....	48
B. Horticulture: .....	49
12. Support for Micro Irrigation System.....	49
13. Support for Trellis System of Vegetable Cultivation .....	49
14. Support for Vegetable Cultivation, Supply of seed /sapling, Fertilizer, bio-Inputs etc. 49	
15. Agro-forestry Model/ Adarsha Bagicha.....	49
16. Producer Group Promotion .....	54
C. Livestock .....	55
17. Goat Shelter construction.....	55
18. Large Goat Shelter Construction .....	56
19. Support for Establishment of Indigenous chick production unit. ....	56
<b>Detail Budget break up of indigenous chick production unit .....</b>	<b>56</b>
20. Support for Poultry Night Shelter .....	56
21. Support for Poultry Vaccine - One time Support.....	57
22. Support for poultry Vaccine Cold Chain Management .....	57
23. Establishment of Goat rearing unit through SHG.....	58

24. Backyard Duck rearing .....	58
25. Azolla cultivation.....	58
26. Enrichment of Crop residue .....	58
27. Commercial poultry enterprise through Broiler farming in dip litter system .....	58
28. Promotion of Perennial Fodder cultivation.....	59
29. Promotion of seasonal fodder cultivation .....	59
<b>D-FISHERY .....</b>	<b>59</b>
31. Farm Pond @ 150000/- per Unit.....	59
32. Support for quality fish seed supply, packaging, and distribution to be undertaken in existing water bodies not covered under MGNREGA .....	59
33. Support for Quality Fish Seed Stocking (Fingerling / Yearling).....	60
34. Support for Establishment of Nano Fish Feed Mixture unit.....	61
35. Support for Promotion of Indigenous Fish Species Culture .....	61
36. Harvesting of marketable fish.....	62
<b>NON-PROGRAMME COST FOR AGRICULTURE, HORTICULTURE, LIVESTOCK AND FISHERY COMPONENT .....</b>	<b>63</b>
1. Summary of different capacity building activities implemented by different stakeholders	63
2. Details of thematic wise different capacity building programme .....	63
3.RFS (Rearers' Field School).....	64
4.Details of capacity building component along with its Module of training .....	64

## Abbreviation

AAO	Assistant Agriculture Officer
ADA	Additional Director of Agriculture
AO	Agriculture Overseer
AFO	Assistant Fisheries Officer
AH&VS	Animal Husbandry and Veterinary Services
AHO	Assistant Horticulture Officer
AICRP	All India Coordinated Research Project
APICOL	The Agricultural Promotion and Investment Corporation of Odisha Limited
ATMA	Agricultural Technology Management Agency
AVAS	Additional Veterinary Assistant Surgeon
BAO	Block Agriculture Officer
BDP	Business Development Plan
BPM	Block Program Manager
CBO	Community Based Organisation
CDAO	Chief District Agriculture Officer
CDVO	Chief District Veterinary Officer
CHC	Custom Hiring Centre
CIG	Common Interest Group
CRP	Community Resource Person
CSC	Community Service Centre
DA & FE	Department of Agriculture & Farmers' Empowerment
DAFP	Directorate of Agriculture and Food Production
DBT	Direct Benefit Transfer
DDH	Deputy Director Horticulture
DFO	District Fisheries Officer
DIEC	District IFS Executive Committee
DIC	District IFS Committee
DoH	Directorate of Horticulture
DoF	Directorate of Fishery
DoW	Directorate of Watershed
DSC & WD	Directorate of Soil Conservation and Watershed Development

DMF	District Mineral Foundation
DPR	Detailed Project Report
DSC	Digital Signature Certificate
DSWO	District Social Welfare Officer
ENAM	e-National Agriculture Market
EPM	Export Promotion and Marketing
FAO	The Food and Agriculture Organization
FF	Farm Family
FGD	Focus Group Discussion
FPO	Farmer Producer Organization
FPIC	Free and Prior Informed Consent
FRC	Farmer Resource Centre
GeM	Government e-Marketplace
GPS	Global Positioning System
GST	Goods and Service Tax
HDPE	High Density Polyethylene
HEW	Horticulture Extension Worker
IEC	Information Education Communication
IMC	Indian Major Carp
JDA	Joint Director of Agriculture
KVK	KrishiVigyan Kendra
LI	Livestock Inspector
MGNREGA	Mahatma Gandhi National Rural Employment Guarantee Act
MoA	Memorandum of Agreement
MSSRF	M S Swaminathan Research Foundation
NBAGR	National Bureau of Animal Genetic Resources
NCDS	Nabakrushna Choudhury Centre for Development Studies
NEFT	National Electronic Funds Transfer
NRAA	National Rain-fed Area Authority
NTFP	Non-Timber Forest Produce
OGFR	Odisha General Financial Rules
OLM	Odisha Livelihoods Mission
OMBADC	Odisha Mineral Bearing Areas Development Corporation

OMM	Odisha Millets Mission
OPELIP	Odisha PVTG Empowerment and Livelihood Improvement Programme
OUAT	Odisha University of Agriculture and Technology
PAN	Permanent Account Number
PD, DRDA	Project Director, District Rural Development Agency
PDMC	Per Drop More Crop
PFMS	Public Financial Management System.
PG	Producer Group
PMDS	Pre-Monsoon Dry Sowing
PMFBY	Pradhan Mantri Fasal Bima Yojana
PMKSY	Pradhan Mantri Krishi Sinchayee Yojana
PMU	Program Management Unit
PoP	Package of Practices
PPVFRA	Protection of Plant Varieties and Farmers' Rights Act
PRA	Participatory rural appraisal
PVT	Participatory Varietal Trials
RBD	Randomized Block Design
RKVV	Rashtriya Krishi Vikas Yojana
RTGS	Real Time Gross Settlement
RTI	Right To Information
SFAC	Small Farmers Agribusiness Consortium
SHG	Self Help Group
SIFFS	Small indigenous freshwater fish species
SLTC	State Level Technical Committee
SPA	State Professional Agency
SPPIF	Special Programme for Promotion of Integrated Farming
SPMU	State Program Management Unit
VAS	Veterinary Assistant Surgeon
VAW	Village Agriculture Worker
WASSAN	Watershed Support Services and Activities Network
WCD	Women and Child Development Department
WSHG	Women Self Help Group
WUG	Water User Group

## 1. Background

Odisha is largely a rural and agrarian economy. About 83 percent of its population live in rural areas and about 48.8 percent of its workforce is employed in agriculture and allied sectors. This workforce contributes about 18 percent of the State's GDP. Increasing pressure on land has led to fragmentation of land resulting in the average landholding size falling from 1.89 hectares in 1970-71 to 0.95 ha in 2015-16. The impact of natural calamities additionally has expanded fallow land in the state. In 2015-16, about 1.7 million hectares of land was classified as fallow of which 0.7million hectares are permanent fallows. The declining farm landholding all over the state has imposed a serious challenge to the sustainability and profitability of farming as well as imposing threats to the food and nutritional security of the State. With the introduction of Integrated Farming System, sustainability and profitability could be achieved with relatively less land requirement as compared to the conventional system. IFS is an interdependent, interrelated, and often interlocking production system based on crops, animals, and related subsidiary enterprises in such a way that maximizes the utilization of resources achieve profitable and sustained agricultural production of each component, and minimizes the negative effect of these enterprises on the environment.

Department of Agriculture & Farmers' Empowerment, Government of Odisha has been implementing different models of integrated farming systems through different schemes such as Rainfed Area Development, Integrated Farming Systems through AICRP, Promotion of Integrated Farming in Tribal Areas (SPPIF) in Malkangiri district, Promotion of integrated farming for nutrition security in Koraput district through agencies such as MSSRF so on so forth.

The Government of Odisha announced SAMRUDHI – State Agriculture Policy of Odisha in 2020. In the policy, it was delineated that Integrated Farming Systems involving agriculture-horticulture-livestock-fishery and allied enterprises will be promoted. Based on the priorities outlined in the SAMRUDHI- State agriculture policy, Odisha organic farming policy 2020, previous successful experiences of IFS, SPPIF is being scaled up with principles of integrated farming through integration of schemes.

## 2. Objectives

1. Optimum utilization of available natural resource with principles of Reduce, Recycle, Reuse & Recovery.
2. Promotion of site specific and landscape-based farming system through diversification, intensification, and integration in cluster approach.
3. To improve livelihoods and income of farmers through enterprises, marketing, and value chain interventions by WSHGs/FPOs.

## 3.Cluster Approach

SPPIF shall be implemented in a cluster approach with clusters being a number of contiguous patches of approximately 100 Ha. 250 Ha shall be covered in 2-3 patches in a GP where at least 600 FFs shall be covered in 4 years. Scale of the programme is mentioned below. Within the clusters, integration of different production systems such as Agriculture, Horticulture, Livestock, Fisheries, Agro forestry shall be done through integration of different schemes. For

components not available under any schemes or wherever gap filling budgets are required, budgets shall be allocated from the SPPIF Budget through state plan.

S.No	Name of the District	No of GPs	Target in Ha	Targeted FF	Duration
1	Bolangir	40	10000	24000	2021-25
2	Kalahandi	40	10000	24000	2021-25
3	Kandhamal	40	10000	24000	2021-25
4	Mayurbhanj	40	10000	24000	2021-25
5	Koraput	20	5000	12000	2021-25
6	Rayagada	20	5000	12000	2021-25
7	Gajapati	20	5000	12000	2021-25
8	Nuapada	40	10000	24000	2021-25
9	Malkangiri	40	10000	24000	2021-23
	<b>Total- 9 dist.</b>	<b>300</b>	<b>75000</b>	<b>180000</b>	<b>4 years</b>

**In addition, SPPIF-SETU programme funded by Planning and Convergence Department is being implemented in 9 GPs of Chitrakonda Block of Malkangiri District since 2020-21.**

## 4.Planning Process

- I. With the clusters, patches of 100 - 250 Ha will be identified.
- II. Each patch is expected to cover 3-5 villages depending on the size of the villages.
- III. PRA exercises such as resource mapping, aspirational mapping, focused group discussion, FPIC and others will be organised in each of the villages by the FAs and CRPs. Local WSHGs/FPOs will also be part of the process.
- IV. SPA will organise the training of CRPs and FA staff on the planning process before the initiation of PRA exercises. Manuals & IEC materials shall be provided to them by SPA.
- V. Following will be mapped through PRA exercises
  - a. Areas and challenges in different crops production systems (inputs, tools, etc)
  - b. Existing yield and surplus and local prices of different crops.
  - c. Existing resources in the patch and areas of intervention and integration
  - d. Existing supply chain and marketing systems
  - e. Sharing of convergence supports the architecture of the SPPIF.
  - f. Mapping of farmer wise/PG wise/WSHGs/FPO wise interventions
- VI. Once the mapping process is completed, a patch wise/village wise IFS plan will be prepared by FA and CRP. As per the village wise IFS plan, scheme wise allocations shall be prepared by SPA.

- VII. Trainings programs and exposure visits shall also be organised for Farmers/PGs/WSHGs/FPOs by FA and SPA.
- VIII. Village level beneficiaries' data collection shall be collected by WSHGs.
- IX. PGs shall be formed if there are no existing PGs or there is no considerable business activity (More than 50000) by existing PG for more than 6 months. If the gap between business activities of any existing PGs is more than 6 months, then they will not be considered.
- X. All patch level/village level plans shall be aggregated into cluster level plans by SPA and submitted for approval of the District IFS EC Committee and District IFS Committee.

## 5.Components and Convergence

S L	Component name	Units	Cost per Unit	Type of beneficiary	Convergence Scheme	Nodal Directorate	Remarks on fund requirement
<b>Agriculture Components</b>							
1	Crop Diversification / Intercropping, Methods	Ha	9000	Farmers	3387-National Food Security Mission (NFSM) - Other Crops 3388-National Food Security Mission (NFSM) - Oil Seeds and Oil Palm	DA & FP/ DoH	Additional allocation/ gap filling fund may be required if allocation from GOI ceases or becomes insufficient.
2	PVT/ Mass Selection	Patch	15000	Farmer	No Scheme is available	DA & FP	Funds required for the Seed conservation activities to SPA @ one unit per Cluster
3	Establishment of Mini Seed Centre	Unit	20000	WSHG/FP O	3231 -Special Programme for Promotion of Millets in Tribal Areas	DA & FP	Funds required for the non-Millets seed storage arrangement etc @ one unit per Cluster
4	Seed Production	Nos	50000	WSHG/FP O	Sub Mission on Quality Planting Material/ Seed Village	DA & FP	Gap filling Funds will be required for screening of local landraces @ 50000/- per cluster.
5	Support for liquid Manure	Nos	50000	WSHG/FP O	No Scheme is available	DA & FP/ Mission Shakti	Funds shall be provided to the SHG for arrangement and procurement of the materials and rent etc @ 50000/- per SHG, @ 5 nos SHG per cluster.

6	Bund Plantations	Ac re	16800	Far mer	3344 National Project on Agroforestry/ SMAF / MIDH/NHM	DSC &WD	No additional fund required. The Convergence made with SMAF medium density cost may be provisioned.
7	Support for Establishing Custom Hiring Centre	Cl uster	50000 0	WS HG/ FP O	2078- Popularization of Agricultural Implements/ Mechanization, 3346- Sub-Mission on Agriculture Mechanization, CHC under OLM 3506- Agriculture Entrepreneurship Promotion Scheme (AEPS) - One stop solution for small holders	DA & FP/Mission Shakti	No additional fund required.
8	Support for Establishment of Processing Units	Cl uster	50000 0	WS HG/ FP O	NFSM, OLM, MIDH- Mission for Integrated development of Horticulture.	DA & FP/DoH/ Mission Shakti	Gap filling Fund may be required for infrastructure support. The Details proposal shall be approved in District IFS and then the Funds shall be released to the concerned beneficiary.
9	Support for Strengthen the Block level FPO	Cl uster	56800 0	FP O	3231- Special Programme for Promotion of Millets in Tribal Areas, NABARD formation of FPO, Promotion and Formation of 10000 Farmer Producer Organizations for FPO promotion”	DA & FP	Gap filling Funds required for Administrative Cost for existing FPOs @ Rs.568000/- per Cluster. Cost norms may be revised as per FPO scheme Guidelines of Govt of Odisha for existing FPOs.
10	Development & Printing of IEC Materials	Cl uster	50000	Stat e leve l	No Scheme is available for IFS activities as such.	DA & FP	The IEC Material shall be prepared by SPA and Approved by SLTC, SPPIF and printed centrally by JDA (Inf). The Cost per Cluster for entire Project Period

11	Video Documentation of Programme Cases Studies	Cluster	100000	State level	No Scheme is available for IFS activities as such.	DA & FP	SPPIF- Fund required Video documentation of Initial phase and end line output along with the case study 1,00,000/- per cluster for the entire project period.
<b>Horticulture Components</b>							
12	Support for Micro Irrigation System	Acre	45000	Farmers	PMKSY	DoH	No Additional Fund is required. As per the demand the proposal for Protective Irrigation shall be submitted to SLSC.
13	Support for Trellis System of Vegetable Cultivation	10 cent	12550	Farmer	SPPIF	DA & FP	As per RKVY approved cost norm. Funds shall be provisioned for Trellis System.
14	Support for Vegetable Cultivation, Supply of seed /sapling, Fertilizer, bio Inputs etc	Acre		Farmer	MGNREGA/OLM (Backyard kitchen garden (Dietary Diversity)/Support to WSHGs on bank linkages) MIDH	DoH/P R Dept/ Mission Shakti Deptt	Convergence with the existing schemes. No Gap filling fund is required
15	Agroforestry Model / Adarsha Bagicha	Acre	69759	Farmer	3344- National Project on Agro forestry/ SMAF, MIDH / NHM	DSC& WD/ DoH	Gap Filling Funds required @ 69,759/- per Acre. Based on supply of seeds/ saplings from schemes, this will be adjusted with due Approval of the DIC for Pit Digging, trench convergence with MGNREGA
16	Promotion of Producer Groups	Nos	300000	SHGs	PG- promotion	OLM/ Mission Shakti/ SPPIF	Gap filling Fund may be required @3 lakh per cluster for the news PGs formed under SPPIF. Fund release shall be done as per SOP approved by SLTC.

<b>Livestock Components</b>							
<b>17</b>	Goat Shelter construction	No s	12000	Far mer	No appropriate scheme available	DA&F E	Medium size goat shelter shall be promoted for small farmer.
<b>18</b>	Large Goat Shelter Construc tion	No s	49000	Far mer	MGNREGA	DRDA	The norms of MGNREGA shall be followed and the Beneficiary list shall be submitted to the district IFS Committee for follow ups.
<b>19</b>	Support for Establish ment of Indigeno us Chicks productio n unit	No s	12810 0	Entr epre neur	No appropriate scheme available	DA& FE	Support for Establishment of Indigenous breed farm at GP level and linked with other FF of villages for chick supply.
<b>20</b>	Poultry Night Shelter	No s	3000	FF	No appropriate scheme available	DA& FE	Small size Night Shelter at FF level to protect birds from predators and provide good shelter.
<b>21</b>	Support for Poultry Vaccine - One time Support	Cl uster	3000	Far mer	No scheme available	DAH& VS	One time support for purchase of Vaccine for clusters.
<b>22</b>	Support for poultry Vaccine Cold Chain Manage ment	No s	12500	com munity	2966- National Livestock Health and Diseases Control Programme	DAH& VS	Gap Filling Fund is required for the procurement of Poultry Vaccine carrier and mini refrigerator etc @Rs 12500/- per unit.@3nos per cluster
<b>23</b>	Establish ment of Goat rearing unit through WSHG	No s	23000 0	WS HG	Integrated Livestock development programme- 78694 small animal development centre	DAH& VS	Gap Filling Fund may be required @ 25% Top up subsidy on the total budget to WSHG (limited to 75%)
<b>24</b>	Backyard Duck rearing	No s	4000	FF	Encouragement of Commercial Poultry Entrepreneur and Promotion of	DAH& VS	No Gap Filling Fund is required

					Backyard Poultry Production		
25	Azolla cultivation	Nos	2000	FF	Fodder Development Scheme	DAH&VS	Gap Filling Fund is required for construction of cemented Azolla pit.
26	Enrichment of Crop residue	FF	2200	Farmer	Fodder development scheme	DAH&VS	No Gap Filling Fund is required
27	Commercial Poultry Enterprise through Broiler Farming In Dip Litter System	Nos	180000	WSHG	Encouragement of commercial poultry entrepreneur and promotion of Backyard Poultry Production	DAH & VS	Additional 20% subsidy fund support to WSHG with approval of District IFS Committee
28	Promotion of Perennial Fodder cultivation	Acres	1128	Farmer	Fodder Development scheme	DAH & VS	No Gap Filling Fund is required
29	Promotion of seasonal fodder cultivation	FF	150	Farmer	Fodder development scheme	DAH & VS	No Gap Filling Fund is required
30	Promotion of Native livestock breeds (Conservation, characterization & livelihood development)	District		Community	No scheme is available	OLRD S/OUAT	Cost structure as per the approval of DAHVS/OLRDS/OUAT
<b>Fishery Component</b>							
31	Farm Pond	Nos	150000	Farmer	MGNREGA	DRDA	No Gap Filling Fund is required
32	Support for quality fish seed supply,	Acres	100000	Farmer	Input assistance to develop Network of Fish Seed Grower for early bred spawn	F&ARD (DoF)	No Gap Filling Fund is required

	packaging and distribution to be undertaken in existing water bodies not covered under MGNREGA						
33	Support for Quality Fish Seed Stocking (Fingerling / Yearling)	Ac re	3000	Far mer	No Scheme is available	DA&F E	Funds required for Stocking Quality Fish Seed (Fingerling / Yearling) @ Rs3000/-per Acre
34	Support for Establishment of Nano Fish Feed Mixture unit	No s	15000 0	Entr epre neur / WS HG	No scheme available for Nano fish feed mixture unit	DA&F E	Fund required @ 1.50lakh per unit per for machinery and working capital support
35	Support for Promotion of Indigenous Fish Species Culture	Ha	90000	Far mer	Input assistant to WSHGs for Pisciculture in GP tanks	F & ARD (DoF)	Convergence with existing schemes. No Gap Filling Fund is required
36	Harvesting of marketable fish.	No s	12000 0	Co mm unit y	Popularization of Fishery Machinery/ Equipment's/ Implement for Intensive Aquaculture	F & ARD (DoF)	Convergence with existing schemes. No Gap Filling Fund is required.

<b>Others</b>							
<b>37</b>	Innovation	Cluster	400000	Cluster	2562- Innovative Projects/ SPPIF-Pilot	SPPIF, DA & FP	The proposal shall be prepared by SPA and submitted to SLTC for approval. Funds shall be released accordingly to the approved agencies.
<b>38</b>	Training & Exposure Visit	Cluster	300000	Cluster	Not Applicable	SPPIF, DA & FP	Funds shall be required 300000/- per cluster per year.
<b>39</b>	Support for FA Cost at Cluster level	Cluster	1084403	Cluster	Not Applicable	SPPIF, DA & FP	Fund shall be released to FA for Programme Facilitation cost
<b>40</b>	Centralized CB and meetings by SPA	District	400000/yr	District	Not Applicable	SPPIF, DA & FP	Fund shall be released to SPA for Organizing the state level consultancy and orientation programme on SPPIF. Funds shall be released as per approved Action Plan.
<b>41</b>	DPMU Cost	District	As approved	Cluster	Not Applicable	SPPIF, DA & FP	Funds shall be released to SPA as per the approved cost for the Programme management at District level per year.
<b>42</b>	SPMU Cost	State	As approved	Cluster	Not Applicable	SPPIF, DA & FP	Funds shall be released to SPA for state level Programme Management and coordination per year.
<b>43</b>	WSHG cost	Cluster	388000	SHG	No Scheme is available	SPPIF, DA & FP	Fund shall be released to SHG through SHG Federation/ FPO for their services as per the cost norm finalized by Mission Shakti Deptt.

## **6. Brief Description of Components**

### **6.a Agriculture Component**

#### **6.a.1 Crop Diversification**

Crop Diversification and Intercropping shall be promoted in the midlands and uplands of the SPPIF clusters. Convergence shall be made through NFSM/MIDH/CDP/other relevant schemes. Focus will be given to promotion of pulses and oilseeds crops. Convergence shall be taken up with OMM for millets. Natural farming systems such as Navadhanya and PMDS shall be piloted for each cluster in the 1st year and suitable well performing crop combinations shall be scaled up further. Once appropriate natural farming models are evolved, they shall be considered for scale up with due approval of DAFE.

#### **6.a.2 PVT (Participatory Varietal Trail)**

Participatory varietal selection is a participatory method through which seed varieties/ landraces suited to the region and preferred by farmers are identified. After identification, further purification and multiplication of landraces can be carried out. FA shall explore different local landraces of different crops available in the block through village meetings and FGDs and shall collect the sample. SPA shall identify suitable patch and farmer in the cluster for the PVT. SPA shall support and oversee the PVT process along with FA. During the harvesting of different landraces, different groups will be formed with community and technical experts to evaluate the landraces based on the criteria. Accordingly, varieties suitable for the cluster shall be selected and multiplies as per demand and interest of the farmers. Detailed manual shall be prepared by SPA on the same.

#### **6.a.3 Seed Center/Seed Production**

Community level seed centers under SPPIF shall be anchored by WSHGs/FPOs. Support shall be provided for availing working capital, purchase of equipment, rent etc. It shall focus on non-millet crops. Seed centre shall be linked to the seed village programme for seed production through OSSC. Foundation seed shall be supplied by OSSC for improved varieties. If suitable WSHGs are not available, FPOs selected through EoI shall undertake seed production.

#### **6.a.4 Support for Liquid Manure**

Under SPPIF, bio input enterprise shall be taken up by WSHGs/FPOs. WSHGs/FPOs shall be trained on different bio-char /bio inputs/natural farming concoctions like Handikhata/ Jibamruta/ Nimastra/ Panchagabya/ Bramhastra/ Agniastra/ Blue Green Algae, other inoculants deemed suitable for the crops which are grown locally. Under this component, financial support shall be provided to WSHGs/FPOs for creating infrastructure for bio-input preparation, working capital and capacity building.

### **6.a.5 Custom Hiring Centre**

In order to make farm machinery for hiring at an affordable price, and to make available within the reach of small/marginal farmers, Custom Hiring Centres shall be anchored by FPOs/WSHGs. Selected WSHGs/FPO shall prepare the demand-based indent of equipment's and enroll under the PAI/SMAM/Mission Shakti/ AEPS schemes for availing the equipment.

### **6.a.6 Post Harvest and Processing Units**

Post-harvest and processing units shall be established through WSHG/FPOs. Fund for these activities shall be converged from NFSM/OLM/ Mission Shakti/ MIDH. Before establishment, an assessment survey shall be carried out by CRP and FA. Business plan preparation shall be facilitated by the SPA. Accordingly, a DPR will be prepared and submitted to the concerned Directorates for convergence with the scheme.

### **6.a.7 Support to Farmers Producer Organization & Institution building**

Wherever existing and functional FPOs are not available, FPOs shall be formed for the field implementation of SPPIF components in convergence with 10000 FPO Scheme. FPOs shall play a key role in service delivery, aggregation, and marketing of agriculture produce. In case of existing FPOs, they shall be supported through the Institution Building component under the program. Engagement of FPOs under SPPIF shall be done through EoI. Facilitating Agencies shall oversee meetings, registration processes etc with the help of NABARD sponsored FPO Scheme and GoI sponsored scheme for Formation and Promotion of 10,000 Farmer Producer Organizations (FPOs).

### **6.a.8 IEC material, Video Documentation & Awareness**

The State Professional Agency (SPA) is responsible for the preparation of IEC materials for the different activities under SPPIF and video documentation of the programme. The SPA shall develop the IEC material in local language and submit to SLCIC under Director, A&FP for approval. It shall be printed by JDA (Information) or as decided by SLCIC.

## **6.b Horticulture Component**

### **6.b.1 Support for Micro Irrigation System**

Under PMKSY-PDMC (Per Drop More Crop), beneficiaries are encouraged to take up micro irrigation, sprinkler systems, drip systems and deployment of HDPE pipes for on-farm water management. FA and CRPs need to mobilize farmers to submit the application in the PMKSY-portal online to avail assistance under subsidized rates as admissible. Concerned HEW/AHO/AAE of the Directorate of Horticulture need to monitor this to ensure greater water use efficiency and crop productivity. This component will be confined to high value agricultural/horticultural crops.

### **6.b.2 Support for Trellis Cultivation**

The Trellis system of vegetable cultivation shall be promoted to ensure optimum utilisation of land resources. In this method the plants creep vertically with support of ropes or wire. Construction of Trellis will be done under the guidance of HEW/ AAE/AHO in convergence under different schemes of DoH. Funds shall be released through DBT or procurement of materials through WSHGs/FPOs.

### **6.b.3 Support for Vegetable Cultivation, Supply of seed /sapling, Fertilizer, Bio inputs etc.**

To meet nutritional security in rural areas, seeds/ seedlings of vegetables shall be supplied to the beneficiary in convergence with MGNREGS/ OLM/ NHM. DDH shall recommend the best performing and locally suitable varieties of seeds and saplings.

### **6.b.4 Promotion of Agroforestry (Adarsha Bagicha)**

To promote agroforestry, the Adarsha Bagicha shall be taken up, which should have a minimum 0.5 acre of upland/ midland. It will tentatively constitute forest species plantation, horticultural plantation, seasonal crops and peripheral plantation. A unit of vermin compost should be constructed to encourage natural farming methods. Land development and muster roll generation shall be done through DSC&WD. Saplings required should be sourced from DDH/DFO (Forest)/DSC&WD under the scheme of MIDH/SMAF/Others etc. Funds for Saplings @Rs.69,759/- per acre will be used in pro rata basis.

### **6.b.5 Producer Group (PG) Promotion**

Producer Group (PG) approach shall be taken up in the SPPIF project areas with involvement of interested farmers for high value crops. The approach of synchronization among the production cycle shall be promoted through the PG approach. The PG shall be trained on cultivating, shorting, grading, packaging, and marketing. The storage facility shall be linked with the producer groups. The facilitating agency and State Professional Agency will facilitate market players for forward linkages.

Wherever PGs formed by Mission Shakti Dept/ ORMAS or other projects are available and are involved in regular business activities for more than 6 months, they shall be involved in the project activities. Wherever PGs are either not formed, or not functional, new PGs shall be formed with interested farmers. Minimum PG cluster size shall be as per PG guidelines of OLM/ORMAS. Efforts will be made to have an optimum size of 80-150 farmers per PG group. PGs will be encouraged to become part of FPO. Based on the business plan, maximum one-time working Capital of Rs 300000/- lakh per PG in two instalments of Rs1.0 lakh and Rs 2.0 lakh respectively shall be provided through SPPIF as per the SOP. Funds will be released only after approval of the business plan by the District IFS EC Committee. In addition, convergence with existing schemes shall also be explored. Second instalment will be released when the PGs are viable and carry out the activities successfully.

## **6.c Livestock Component**

### **6.c.1 Vaccination**

To overcome various types of poultry and goat diseases which cause mortality in poultry and goat rearing, field-level vaccinators shall be trained in vaccination. Data on livestock population of the cluster and disease frequency shall be collected by CRPs through village meetings. The vaccine indent thus prepared by FA and shall be submitted to the AVS/BVO/CDVO at district level. A calendar for vaccination shall be prepared in consultation with the LI, VAS, and other officials. A training program shall be taken up under guidance of the Department to maintain the cold chain of the vaccine. For safe carrying of the vaccine to field during vaccination and for protection from light, financial assistance will be provided @Rs 12500/unit @ 3nos of unit per cluster for purchase of vaccination kit and mini refrigerator.

### **6.c.2 Goat Shelter Construction**

An ideal and hygienic shelter is also of equal importance for livestock rearing. Shelters with proper ventilation shall lead to less mortality, good health, and desire growth of animals thereby ensuring better income. Under the programme, medium shelters shall be taken up and for the larger shelters, for small and large ruminants, convergence shall be done through MGNREGA. There is fund provision @Rs12000/unit through SPPIF for medium units and @Rs49,000/- through MGNREGA for large shelters.

### **6.c.3 Support for Establishment of Indigenous Chicks Production Unit.**

The programme aims at promoting indigenous chicks' production units in cluster mode for creating a supply chain of chicks/ growers and adult birds on a regular basis. Model indigenous chicks' production unit shall be constructed at village level along with the night shelters in a cluster approach. Livelihood Support in the form of 50 birds of 4-month-old, with a farm shed and fencing, feed, vaccination and supplementation, feeders and drinkers, Azolla pit, egg laying box, etc. will be provided. Fund provision @Rs 128100/-unit is there under SPPIF.

### **6.c.4 Support for Poultry Vaccine: (One time support)**

To overcome various types of poultry diseases which cause mortality in poultry and rearing, field-level vaccinators shall be trained in vaccination. Data on livestock population of the cluster and disease frequency shall be collected by CRPs through village meetings. The vaccine indent thus prepared by FA and shall be submitted to the ARD Department. A calendar for vaccination shall be prepared in consultation with the LI, VAS, and other officials. A training program shall be taken up under guidance of the Department to maintain the cold chain of the vaccine. Onetime support of Rs3000/- per cluster will be given as assistance for the purchase of vaccine like fowl pox or any other wherever sufficient vaccines are not available.

### **6.c.5 Establishment of commercial goat rearing unit through WSHG**

It aims to support WSHG to enhance livelihoods and income through establishment of goat rearing unit. It will increase meat production and meet the growing demand of meat in the state. Fifty percent (50%) subsidy will be given to the WSHGs on the project cost. The Selected WSHGs shall be supported with additional top up subsidy @ 25% from SPPIF Scheme limiting the total subsidy to 75%.

### **6.c.6 Livelihood support to farmers through Duckery Farming:**

It aims to increase egg and meat productivity in the state; it will help in augmenting income of farmers and also provide additional nutrition security at household level. Livelihood support will be provided to individual farmers in the shape of 50 numbers of 2-week ducklings and a low-cost shelter.

### **6.c.7 Backyard Azolla cultivation for livestock consumption:**

Support to farmers through state plan fodder development scheme. For development of feed resources in their backyard for animals to reduce cost of production and increase farmers' income as it is a good source of vitamins, Protein, Amino acids, and micronutrients. Gap filling fund may be allocated for construction of cemented Azolla pit.

### **6.c.8 Crop residue enrichment:**

Support to farmer through convergence in the state plan Fodder development scheme. It aims to enrich the nutritional level of crop residues by adding suitable additive like urea, molasses, and minerals. Roughages like paddy straw, maize can be taken up for enrichment. It will help in additional saving on feed cost and increase milk production. Each household will be provided a support for the enrichment of 10 quintal crop residue for their 2 cows for 180 days.

### **6.c.9.Commercial enterprises through Broiler Farming:**

Support for farmers for establishment of a 500-capacity broiler unit through convergence with the scheme- Encouragement of commercial poultry entrepreneurs and promotion of backyard poultry production. Aims to support farmers for setting up a broiler farm with a capacity of 500 birds in dip litter system as a profitable mini enterprise. It will help in enhancement of livelihoods and income among farmers through broiler meat production. The beneficiary will be provided a maximum of 40% subsidy. After selection of beneficiary CDVO/ BVO will facilitate the credit linkage for loan. Subsidy will be released after joint verification of BVO/ LI/ Panchayat Extension Officer. The Selected entrepreneur shall be supported with additional top up subsidy @ 20% from SPPIF Scheme with approval of District IFS Committee.

### **6.c.10 Perennial fodder cultivation:**

Support to farmers for cultivation of perennial fodder through the Fodder Development Scheme. It aims to help farmers for availing green fodder with ease of harvest. Under this scheme, perennial fodder seed like sorghum COFS 29, COFS 31 will be supplied to the selected beneficiaries on free of cost for perennial fodder cultivation for at least 0.10 hectare to maximum 1.0 Hectare with maximum limit of 6k.g seed.

## **6. C.11. Promotion of Seasonal fodder cultivation.**

One farmer can be assisted up to maximum of 20 no's mini kits for fodder cultivation over 0.25 acre to max area of 5.0 acres. One mini kit comprises of Maize (1 packet of 3 Kg. seed) and Cowpea (1 packet of 1 kg. Seed) which is usually meant for fodder crop cultivation (cereal and legume component) over 0.25 acre. The seed will be procured and supplied to the district HQ points through central / State Govt. approved seed supplying agencies as per the district wise target as approved in guideline of DAH&VS.

## **6.c.12 Promotion of Native livestock breeds (Characterization, Conservation, & livelihood development):**

Characterisation, Conservation and Livelihood development of native animal breeds shall be taken up under SPPIF under guidance of OLRDS and OUAT. Technical sub Committee formed at DAHVS shall finalize the cost norms and district wise annual action plan for these activities. Key activities to be taken up under the component include feasibility study, population estimation, awareness campaign, biometric characterisation as per NBAGR guidelines, Bio molecular characterisation by OUAT, Recording of milking and reproduction cycles, submission of blood samples to NBAGR, capacity building for enumerators and SPPIF stakeholders, livelihood and conservation plan development in the native tract so on so forth.

## **6.d Fishery Component**

### **6.d.1 Support for Farm Pond**

Under this component, creation of farm ponds for freshwater fisheries shall be taken up to promote fish production in the rural areas under SPPIF. Farm Ponds will be constructed in convergence with MGNREGA.

### **6.d.2 Support for quality of fish seed supply and distribution**

Fish seed, a major input in Pisciculture which is the primary determinant of total fish seed production and the net profit gain. Identified beneficiaries will be provided with incentives for Seed. At present Government of Odisha provides subsidy for procuring fish seeds, feed and net @ 40% for General and @ 60% for SCs/STs/Women farmers in a single cycle as per the guidelines of the scheme "Input Assistance to Develop Network of Fish Seed Grower for Early Bred Spawn". For ensuring adequate supply of seeds, a network of local seed growers will be developed and linked with the Department of Fisheries.

### **6.d.3 Support for quality of fish seed supply stocking**

Assistance in the form of subsidy shall be provided to farmers with existing ponds. Adequate amount of feed supply to Fingerling / Yearling will be ensured. Rearing of Fingerlings/Advanced fingerlings shall be encouraged with an incentive of Rs 3000/- per acre.

### **6.d.4 Support for establishment of Fish Nano Fish Feed mixture unit**

Local farmers are not able to afford supplementary feed for fishes because of high price. Establishment of Nano Fish feed mixture unit is intended to enable low-cost feed production

by reducing cost involvement in transportation and value chain. Nano fish feed production units shall be established through the SPPIF programme on a small scale for local farmers @ Rs 150000/- per cluster basing upon the feasibility.

#### **6.d.5 Support for establishment of Integrated Fish Farming System**

Integrated fish farming system plays a vital role in minimising the risk and maximizing the profit gained for farmers. The present project proposes the integration of fish farming with allied activities of agriculture, horticulture, and livestock.

#### **6.d.6 Support for Promotion of Indigenous Fish Species Culture**

Species diversification is an important part for the enhancement of fisheries productivity and production. Promotion of indigenous fish species culture shall ensure the food and nutritional security along with the protection of biodiversity. Assistance is provided for procurement of Mola seeds @25 kg/Ha (Rs 400/Kg) to WSHGs as a part of Input assistant to WSHGs for Pisciculture in GP tanks Scheme. Subsidy provision shall be made for culture of indigenous fish species.

#### **6.d.7 Harvesting of marketable fish.**

To enable the beneficiaries for utilizing fishing equipment and techniques, Nets and other gear should be available on hiring basis. Nets and gears should be kept under the Custom Hiring centre and should be availed by the stakeholders as per the requirements. The number of nets may be as per the local demand of the Farmers and approved by the DFO.

Govt. of Odisha provides assistance for fishing nets with all fittings @ 40% of the unit cost of Rs 50000/- under the scheme Popularisation of Fishery Machinery/ Equipment's/ Implements" for Intensive Aquaculture. SHGs shall be selected in consultation with the Department of Mission Shakti and Department of Fisheries.

### **6.e Innovation**

Proposals under innovation shall be prepared by SPA in consultation with line Departments/ICAR/OUAT/Technical Experts/NGOs, etc. Proposal shall be submitted to technical approval of SLTC. After approval of SLTC, it will be submitted to SLCIC for approval. Budgets shall be released to SPA/respective agencies as per the approved proposal.

### **6.f Training & Exposure visit**

Creating awareness among the Farmers through orientation, Training and Exposure visit is also one of the important factors to get the project objective and best outputs. The Capacity Building is broadly classified into 4 categories. Village level awareness programme, one day GP level Training Programme, Two days Cluster level Training Programme, Exposure visits etc. The yearly training plan shall be prepared by FA in consultation with ATMA and will be approved by the district IFS Committee. As per the approved training programme and calendar the CDAO cum PD ATMA shall release funds to Facilitating Agency and monitor the Implementation. CDAO/DDH/CDVO/DFO may depute concerned block level officers and GP level extension officials for attending the training based on the field level feasibility. At least

20% and 50% of trainings should be attended by concerned block level and concerned GP level officers respectively.

### **6.g Support for Facilitating Agency Cost**

The cost provisioned under the programme for facilitating agency is meant for project staff salary, administrative cost, Office Maintenance and Audit fees of Organisation engaged at cluster level under the SPPIF Programme. The staff engaged under the programme should not be engaged otherwise the project of any Department.

### **6.h Centralised Capacity Building and Meetings**

The SPA shall be responsible for organise the centralise meeting and capacity buildings, workshops and so on so forth for the Facilitating Agency and Farmers Producer Groups as well as with the line Departments for the smooth implementation of the programme, cross learning sessions among the partners, skill enhancement of the staffs etc.

### **6.I District Project Management Units Cost**

The DPMU (District Project Management Unit) shall be anchored by CDAO cum PD ATMA. Detailed responsibilities mentioned in the role and responsibility section.

### **6.J State Project Management Units Cost**

The SPMU (State Project Management Unit) shall be anchored by DAFP. Detailed responsibilities mentioned in the role and responsibility section.

### **6.k WSHG**

The WSHG member shall be actively engaged at village level for beneficiary selection, User fees collection, share capital raising, arrangement of the programme Meeting, training, awareness, vaccination camp etc. The SHG shall submit the reports and records as prescribed by the SPA and FA. The Funds shall be released to WSHS through FPO. The FA and FPO along with the representatives of Mission Shakti Department shall select village wise SHGs for programme implementation. The cost for the SHGs shall be followed as per approved cost norms of Mission Shakti.

**NB: 1. WSHG selection shall be done for engagement in different agriculture entrepreneurship activities as per joint guideline issued by Department of Agriculture & Farmers Empowerment and Department of Mission Shakti vide DAFE letter no DAFE-SCHM-MIC-0002-2021-20738 Dt 27.10.2021 & vide Letter no 24671/09.12.2021.**

**2. The cost structure of WSHGs under SPPIF is provided vide letter no. MS-LSD-GOVCON-0004/2022-341MS dated 10.03.2022.**

## 7. Role and Responsibilities

### 7.1 High Power Committee on Integrated Farming:

A High-Power Committee on Integrated Farming shall be formed under chairpersonship of Agriculture Production Commissioner cum Additional Chief Secretary, Government of Odisha. It will have following members: -

- a. Secretary, Agriculture & Farmers Empowerment Department
  - b. Secretary, Animal Husbandry & Fisheries Department
  - c. Secretary, Water Resources Department
  - d. Secretary, ST SC Backward Classes, and Minority Welfare Department
  - e. Secretary, Mission Shakti Department
  - f. Secretary, Panchayati Raj Department
  - g. Secretary, Forest & Environment & Climate Change Department
  - h. Chairman, Odisha State Bio-diversity Board
  - i. Director, Agriculture & Food Production
  - j. Director, Horticulture
  - k. Director, Soil Water Conservation & Watershed Development
  - l. Director, Animal Husbandry & Veterinary Services
  - m. Director, Fisheries
  - n. Managing Director, OPELIP/OTELP
  - o. Mission Director, OLM
  - p. Managing Director, OMBADC
  - q. Managing Director, OMC
  - r. Managing Director, APICOL
  - s. Director, NCDS
  - t. Dean Extension, OUAT
  - u. Additional Director of Agriculture (Extension), DAFP
  - v. Joint Director, SPMU, IF
  - w. Associate Director/Representative, State Professional Agency.
- I. Director, Agriculture & Food Production, Odisha will be member convenor of the Committee.
  - II. Committee will meet once in six months to deliberate policy matters and facilitate inter-Departmental convergence.
  - III. All policy formulation, rules and regulations and decisions regarding inter Departmental convergence shall be approved by the HPC.

### 7.2 State Level Coordination and Implementation Committee

The State Level Coordination and Implementation Committee under the Chairmanship of Director, DA&FP oversee the coordination and implementation of the IFS. The Committee will be constituted with the following members

- a. Director, Horticulture, Odisha
- b. Director, NCDS, Bhubaneswar
- c. Director, Soil Conservation & watershed Development

- d. Director, Animal Husbandry & Veterinary services, Odisha, Cuttack
  - e. Director, Fisheries Odisha, Cuttack
  - f. Principal Chief conservator of forest, Odisha Bhubaneswar
  - g. Dean, Extension, OUAT, Bhubaneswar
  - h. Director, Agriculture Marketing
  - i. Add. Director of Agriculture (Extension)
  - j. Joint Director of Agriculture (OMM & IFS), Member convener
  - k. Member Secretary, Odisha State Bio- diversity Board
  - l. M.D, APICOL
  - m. Director, OSSOPCA
  - n. M.D OSSC
  - o. Associate Director/State Coordinator, SPA of SPPIF.
- I. It will approve the Department wise and scheme wise allocation of funds for the SPPIF for convergence.
  - II. It will review physical and financial progress of the activities of the Programme once in a Month.
  - III. It will review and approve the guidelines/operational modalities/amendments/ SOPs of the different components suggested by SLTC/Technical subgroups formed under SPPIF.
  - IV. It will approve any proposals/collaborations submitted by the different stakeholders for undertaking the research/innovation activities under SPPIF.
  - V. It will issue joint instructions from time to time to different District level officials of directorates/districts for better convergence and implementation of the activities.

### **7.3 Department of Agriculture & Farmers' Empowerment**

- I. Department of Agriculture and Farmers' Empowerment is the nodal agency for administration and funding the Programme.
- II. It will regularly review the programme once in two months.
- III. It will also approve the allocation of funds for the Programme.
- IV. It will examine plan of convergence of schemes of line departments.

### **7.4 State Level Technical Committee on Integrated Farming Systems**

A state level technical Committee on integrated farming systems formed under the Chairmanship of Director, Agriculture & Food Production to provide technical support to the project. It will consist of following members:

- a. Director/Representative, SC &WD
- b. Director/Representative, Horticulture
- c. Director/Representative, AH&VS
- d. Director/Representative, Fisheries
- e. Director/Representative, Mission Shakti/OLM
- f. Director/Representative, ST & SC
- g. Director/Representative, Forest & Environment & Climate Change
- h. Director/Representative, State Medicinal Plant Board
- i. Technical Expert/Representative, NRAA

- j. Director/Representative, NCDS
- k. Dean Extension/Representative, OUAT
- l. Representative, FAO
- m. Additional Director of Agriculture (Extension), DA&FP – Member Convenor
- n. Chief Agronomist, AICRP on IFS
- o. Joint Director of Agriculture, SP&C
- p. Joint Director of Agriculture, Farm & Seed
- q. Joint Director of Agriculture, Plan & Commercial Crop
- r. Joint Director of Agriculture, IFS
- s. Scheme Officers, IFS
- t. Director/Representative, MSSRF-Jeypore
- u. Associate Director/Representative, WASSAN

- I. Committee will identify different models for promotion of integrated farming.
- II. Committee shall revise the design and cost norms of the components.
- III. Committee shall oversee documentation and suggest/give feedback on any interline modification/changes/amendments to be made in the guideline/operational modalities.
- IV. Committee shall meet once in 3 months.

## **7.5 Directorate of Agriculture & Food Production, Odisha**

- I. Directorate of Agriculture & Food Production, Odisha is the nodal agency for overseeing the monitoring and implementation with support of PMU placed within it
- II. It will approve the annual action plan for the project
- III. Inter componential diversion of fund between different components shall be made with approval of Director, Agriculture & Food Production, Odisha

## **7.6 DSC&WD /DoH/ DAHVS/ DoF /DoST/ OLM & other Directorates**

- a. Each Directorate shall allocate targets and funds from their concerned schemes to the SPPIF clusters for convergence.
- b. Each Directorate shall assign an official for coordination with PMU under IFS towards the convergence activities.
- c. Each plan of action shall be approved by state level coordination and implementation Committee and High-Power Committee on IFS
- d. Each Directorate shall issue instructions to their district level staff to provide their necessary support for implementation of the scheme.
- e. Each Directorate shall review their district officials once in every month on the progress of convergence activities.
- f. Each Directorate shall nominate members for coordination and convergence with different directorates.
- g. Action plan preparation and allocation of funds of different schemes for SPPIF shall be updated in ADAPT portal

## **7.7 State Project Management Unit (SPMU)**

- a. Director of Agriculture & Food Production, Odisha shall be the Mission Director of the SPMU of SPPIF.
- b. Additional Director of Agriculture (Extension) shall be the head of the SPMU of SPPIF.

- c. JDA, IFS shall report to Additional Director, DA&FP for the project implementation.
- d. AAO/BAO/ADA of the scheme shall be attached to SPMU of SPPIF and shall report to the JDA, IFS and Additional Director, DAFP at state level.
- e. The State Professional Agency will provide all kind of support to the SPMU.

## 7.8 State Professional Agency:

- a. Development of Programme design, Programme process, Programme Implementation, Process Guidelines and Operational Modalities.
- b. Preparation of Annual Action Plan of the District in consultation in with FA/ FPO/ DIEC.
- c. Capacity building modules and identifying CB institutions and resource persons & extending support to FAs in the field.
- d. Identifying resource organisations/ individuals, liaison with research institutions and formation of expert support groups/technical subgroups for the project. Organise virtual/in person consultations with due approval of DAFP.
- e. It will develop proposals for both funded and non-funded collaborations and submit it to DAFP for approval. Engage with agencies such as NRAA, FAO and others for learning experiments with due approval of the DA&FP.
- f. Facilitating monthly, bi-monthly and half yearly review of the programme by different Committees at State Level and District IFS Committee by Collector & District Magistrate at District Level.
- g. Anchoring Farmer Resource Centre at District Level.
- h. Developing M & E, reporting system processes and submission of the M & E reports to Directorate of Agriculture and Food Production at State Level and District IFS Committee at District Level.
- i. Development and maintenance of web-based Management Information System.
- j. Responsible for process documentation, case studies, success stories, publications, etc.
- k. Responsible for undertaking the different program activities assigned by the DAFP from time to time. Develop proposals for IFS for extension through OMBADC/DMF/Other funding sources with approval of competent authority. Develop and submit the innovation proposals for the approval of the DAFP.
- l. Providing feedback and suggestions on actions needs to be taken to the Directorate Agriculture and Food Production at State Level and District IFS Committee at District Level.
- m. Verification of compliance of financial and physical reports submitted by FAs.
- n. Responsible for undertaking the different program activities assigned by the DAFP from time to time.

## 7.9 Research & Evaluation Agency

- a. NCDS has been chosen as Research Secretariat for the SPPIF in 9 districts.
- b. NCDS shall undertake Baseline, midterm, end line survey work and impact assessment for nine (9) districts. It may also develop policy papers or undertake additional research as per instruction of SLCIC/HPC on IFS.
- c. NCDS will enter into MoA with DAFP on the same.

## 8. District Level

## 8.1 District IFS Committee

Collector & District Magistrate is the Chairperson of “District IFS Committee” of the district.

Following will be members of District IFS Committee.

PD, DRDA	DDM, NABARD
CDAO cum PD ATMA (Convener)	PD, Watershed from DSC &WD
CDVO, F &ARD Dept.	Nodal Officer, PMKSY
DFO- F &ARD Dept.	PA, ITDA (Concerned Clusters)
DDH, from DoH	Executive Engineer/ Assistant Executive Engineer (Agril)
DSWO, WCD & MS Department	DPM, OLM
Senior Scientist & Head, KVK	State Professional Agency
Facilitating Agency Representative	Representatives, NCDS (As per need)
SPO/ASPO of OSSC (If necessary)	SCO/ASCO, OSSOPCA (If necessary)
<i>Any Officer from allied Departments at the District level related to the activities under SPPIF may be included in the Committee with permission of the Chairman of the Committee.</i>	

- The District IFS Committee will meet once in two months to review the progress and facilitate convergence of both individual and Community based IFS (SPPIF).
- The District IFS Committee is responsible for approval of District Annual Action Plan and Budget as per approved SPPIF Guidelines.

## 8.2 District IFS EC Committee

- District level IFS EC Committee will be formed under the Chairpersonship of CDAO cum PD ATMA with DDH, CDVO, DFO, PA ITDA, DPC Mission Shakti, DPM OLM, KVK Scientist, SPA and representatives of FA. Any other member can be suggested as special invitee or as a member by the Committee members with approval of CDAO cum PD, ATMA.
- DIEC shall review the progress of the IFS scheme on a monthly basis and approve the beneficiary list submitted by the BTT Committee.
- Concerned line Department heads shall give necessary technical approval for the implementation of the different components.
- DIEC shall submit the convergence proposals for approval of Collector & DM.
- District IFS shall coordinate and ensure that GP level and Block level representatives of Departments, NGOs and FPOs meet monthly for effective planning, integration and implementation.
- GP level and Block level FRC shall also be formed.
- Block level FRC meetings shall be converged with FIAC meetings.

- h. FA shall convene GP level FRC meetings.

### **8.3 Chief District Agriculture Officer (CDAO cum PD ATMA)**

- a. CDAO cum PD ATMA is the nodal person cum head of District Level Programme Management Unit (DPMU) of SPPIF.
- b. The scheme officer of SPPIF at the district agriculture office will support CDAO cum PD ATMA in management of DPMU.
- c. Staff engaged by the State Professional Agency shall support CDAO cum PD ATMA.
- d. CDAO cum PD ATMA shall enter into tripartite MoA with State Professional Agency & FA.
- e. CDAO cum PD ATMA shall enter into tripartite MoAs with FPOs & FA.
- f. DPMU shall support programme implementation and convergence as per approved guidelines and subsequent amendments of the SPPIF.
- g. CDAO cum PD ATMA will provide suitable office space and desks to DPMU staff of State Professional Agency for smooth monitoring of programmes.
- h. A monthly review meeting of concerned DAO/AAO/BAOs of programme blocks, FAs, FPOs, & District Project Coordinator (DPC) of State Professional Agency under Chairpersonship of CDAO cum PD ATMA.
- i. CDAO cum PD ATMA shall release funds as per the approved budget of SPPIF.
- j. CDAO cum PD ATMA shall ensure programme implementation as well as convergence activities under the SPPIF.

### **8.4 DRDA/DFO/DDH/CDVO/DFO (Fisheries)/PD Watershed/DSWO**

- a. Shall be member of District IFS EC Committee and District IFS Committee
- b. Each district line Department shall issue necessary instructions to their field level staff for active participation in selection/authentication of the beneficiaries, capacity building and innovation activities and implementation of convergence plan of the concerned line Department.
- c. It shall ensure that utilisation of scheme wise allocation of the budgets allocated for the SPPIF clusters.
- d. It will review their field level staff from time to time to track the progress of activities under SPPIF.

## **9. Block Level**

### **9.1 BTT Committee**

The BTT Committee shall meet as per the guideline circulated by DA &FP vide letter no 23113/CS DAFE- SCHM-MISC-0004-2021 on dated 24-11-2021

- a. The BTT Committee shall ensure the beneficiary selection, field verification, Field monitoring, and execution.
- b. The BTT Committee shall provide support to the Project staff in Programme Implementation.
- c. The BTT Committee shall review the progress of the SPPIF programme in Bi-weekly meetings.

- d. The BTT Committee members may attend the proposed capacity building programme as per their convenience.
- e. The BTT Committee shall facilitate the convergence of schemes with concerned Departments.
- f. The BTT Committee shall authenticate the beneficiary list and submit it to the district IFS Committee.
- g. BTT Committee shall bring the issues that are not resolved in the BTT meeting to the district level Committee meeting.
- h. Shall prepare the Block level activities on agriculture and allied sectors.

## **9.2. Facilitating Agency (FA)**

- a. An NGO will be selected as Facilitating Agency (FA) through EoI process floated by DA & FP, Odisha to support implementation of SPPIF in the assigned clusters
- b. MoA will be signed between CDAO cum PD ATMA, State Professional Agency and Selected FA.
- c. FAs will be responsible for supporting FPOs for implementation of the SPPIF.
- d. FAs will provide technical support to FPOs/CRPs on all the SPPIF activities. They will support FPOs in preparation of plans, estimate, documentation, book keeping and accounting and other activities.
- e. FAs will submit the FPOs plans to CDAO cum PD ATMA and State Professional Agency.
- f. FA/FPO will monitor the work of the CRPs and submit the consolidated reports to the BTT Committee. It will facilitate visits of concerned BTT Committee members for their respective thematic components.
- g. These plans will be further reviewed by the District IFS Committee and funds will be sanctioned.
- h. FAs shall backstop FPOs to ensure that all financial protocols and necessary processes are followed by FPOs. FAs are responsible for financial compliance of FPOs against released Programme funds. Accountants of SPA placed at District level shall be given this responsibility.
- i. Extension Officers of various Departments at the Block level (FRC) shall also provide technical support to FAs and will monitor the Programme at Block Level.

## **9.3. Community Resource Person (CRP)**

- a. CRP shall collect the village wise beneficiary list from WSHGs with relevant documents and submit to FA/FPO/BTT.
- b. CRP shall maintain records of different activities of WSHGs/FPOs at village level as per the formats approved in the scheme.
- c. CRP shall also facilitate approval of the village wise plan in the Gram Sabha, if required.
- d. The CRP shall facilitate field level visits of BTT Committee members/SPA and other Departmental officers.
- e. CRPs shall upload the information for geo- tagging in the web portal.
- f. CRPs shall be wholly responsible for conducting the activities assigned to them in the SPPIF clusters. They can be removed by the CDAO cum PD ATMA for poor performance on recommendation of BTT Committee.

### **9.3.a Selection Process of CRP:**

- I. The CRP selection process will be done by FPO, FA and AAO/BAO through a selection Committee.
- II. The Committee members will analyse the available information on different persons suitable for the selection.
- III. If no such suitable person is available from the village/ GP then persons from nearby village of the GP can also be given the assignments.
- IV. While assigning the responsibility to a CRP, the Committee has to inform the CRP regarding terms of engagement that include incentive norms, deliverables, performance appraisal mechanism and duration of assignments.
- V. It is pertinent to mention here that this support will be provided only till the project period. If work is not delivered as assigned, then the payment shall be made in proportional basis.
- VI. For assessment of deliverables of CRP giving support to framers, reporting register will be developed by FPO/FA and will be used by CRP and will be verified regularly by Officials from Departments/FA/FPO/SPA.
- VII. The Progressive farmers involved in particular activity Livestock/ Fishery etc. can also be selected as CRP.

### **9.3.b Mode of Payment of CRP:**

- I. While assigning the responsibility to a CRP, the FPO/ FA have to inform the CRP in writing regarding the terms of engagements that include incentive norms, deliverables, performance appraisals mechanism and duration of assignments.
- II. The FPO/ FA shall refer the work done register of the month and transactional report generated from website collected by the CRP through Mobile App and payment should be done accordingly.
- III. The honorarium should be released on monthly basis as per the duty days duly approved by the FPOs and certified by FA. The VAW/HEW/ LI/AAO/AHO/ AFO shall also monitor the work of CRPs time and again.
- IV. The payment shall be done by FPOs on monthly basis through bank account transfer after verification of the work register.

## **9.4. Farmers Producer Organization (FPO/WSHGs)**

- a. Farmers' Producer Organizations already existing or to be formed in each cluster (10 GPs) will be implementation partners of SPPIF. In the cases where FPOs are not available, convergence with GoI Scheme will be explored for formation of FPOs.
- b. FPO shall be selected through a process of EoI by the CDAO cum PD ATMA as per the Scoring criteria developed by State Professional Agency. Applications shall be screened by the District IFS Executive Committee.
- c. FPOs formed under Odisha Millets Mission and other programs of Department of Agriculture & Farmers' Empowerment will be given preference in the selection process.
- d. Support to FPOs for CEO/other administrative expenses will not be provided from SPPIF scheme, if they are getting same assistance from OMM or any other schemes. Duplication of such expenditure should be avoided. A self-declaration to the same should be issued by FPO. If any evidence is found to the contrary, action shall be taken.

- e. Selection of FPOs shall be done through a presentation by shortlisted applicants before the District IFS Committee under Collector & District Magistrate.
- f. The Village Agriculture Worker/ Horticulture Extension Worker/ Livestock Inspector/ Community Resource Persons in the programme GPs will also support the FPOs of SPPIF.
- g. Block level officers of Departments will also monitor the programme and report to the concerned District heads. Responsibility of oversight, support to FPOs and ensuring compliance with financial protocols lies with the FA and SPA.
- h. The State Professional Agency will inform Directorate of Agriculture on the required changes on Guidelines/Operational modalities and any other required changes on half yearly basis based on the recommendation/ feedback of district level meetings.

### **9.5. Women Self Help Group- Service Provider**

- a. The WSHG shall organise village level meetings and disseminate information about the scheme and potential opportunities available in the scheme.
- b. The WSHG shall mobilise the community and will select the potential beneficiaries of different schemes as per selection criteria.
- c. The WSHG shall be responsible for creating awareness programme and its arrangements,
- d. The WSHG shall maintain the records of activities undertaken in SPPIF such as Farmer's list, Meeting resolutions, Awareness campaign and vaccinated livestock details etc.
- e. The WSHG shall help the CRP, FPO and FA in programme delivery and business activities.
- f. The WSHG shall be responsible for collection of fees for farmers' registration, farmers' contribution and raise share capital as designed and fixed by FPOs.
- g. The WSHG shall be actively involved in Seed Production and demand generation of different activities such as seed indent, construction, processing units, etc.
- h. The WSHG shall submit the report to FPO for authentication and the same shall be submitted to BTT for further verification and process for payment.
- i. The BTT Committee member, representative of FA and SPA shall visit and review the engagement of WSHG anytime. In case of any WSHG not actively disseminating the programme as per the task, the WSHG may be disengaged and new WSHG will be involved.

## 10. Implementation strategy

### 10.1 Process of selection of beneficiary

Type	Individual	WSHG/FPOs
Eligibility Criteria	<ul style="list-style-type: none"> <li>All types of farmers i.e. large, medium, small and marginal including tenant farmers are eligible for all activities under the scheme.</li> <li>For all crop related activities, the beneficiary bearing Soil Health Card will be given priority.</li> <li>For components converging with GoI /State schemes, concerned scheme guidelines will be applicable.</li> <li>Wherever feasible, preference shall be given to ST/SC Women and vulnerable households.</li> </ul>	<ul style="list-style-type: none"> <li>Process of selection of WSHGs shall per approved guidelines. Letter No: 20738dtd 27.10.2021 and FPO selection through EOI process</li> <li>FPOs/WSHGs selected through the EoI process for the project shall undertake the activities.</li> </ul>
Process of selection	<ul style="list-style-type: none"> <li>WSHGs, FPOs, FA &amp; CRP shall organise village meetings for selection of beneficiaries.</li> <li>For existing schemes, selection criteria of the concerned scheme shall be applicable.</li> <li>For components funded under SPPIF, beneficiary should have</li> <li>Aadhar ID</li> <li>Farmer ID/Kalia ID</li> <li>Bank Account linked with Aadhar</li> <li>Should follow the PoP of the concerned component.</li> </ul> <p>Beneficiary list shall be submitted to BTT member for authentication at least 20%. CRP shall submit the list of suitable beneficiaries for the different components to the BTT Committee with due authentication of FA.</p>	
Process of authentication	<ul style="list-style-type: none"> <li>The Beneficiary list shall be verified by the BTT Member of concerned Department.</li> <li>Authentication shall be done on random basis.</li> <li>Verified list of farmer shall be submitted to CDAO cum PD, ATMA for further processing. <ul style="list-style-type: none"> <li>The verification shall be completed within 15days after receiving of the application.</li> </ul> </li> </ul>	<ul style="list-style-type: none"> <li>Shall be authenticated by CDAO Cum PD, ATMA.</li> </ul>
Process of Procurement	<ul style="list-style-type: none"> <li>Procurement process for existing schemes of GoI/Govt of Odisha shall be done as per concerned scheme guidelines.</li> <li>For activities where DBT is not applicable, procurement shall be done through WSHGs/FPOs</li> </ul>	<ul style="list-style-type: none"> <li>Expenditure shall be made by WSHGs/FPOs as per the OGFR norms.</li> </ul>

	<p>with due approval of the concerned line Department as per approved estimates by CDAO cum PD ATMA/concerned district level Department head.</p> <ul style="list-style-type: none"> <li>• Estimates may be changed as per changes in cost norms issued by the Govt from time to time. In case of any change in costing due to local variation of prices, DIEC shall submit the revised cost norms to SLTC for review and technical approval. After SLTC approval, it shall be approved in the SLCIC under Director A&amp;FP. Where ever required, approval of HPC on IFS shall be taken.</li> </ul>	
Process of Expenditure	<ul style="list-style-type: none"> <li>• Fund release for existing GoI/Govt of Odisha schemes shall be as per the concerned scheme guidelines.</li> <li>• For components funded under SPPIF scheme,</li> <li>• The Incentive shall be released to beneficiary through DBT mode</li> <li>• The Incentive under DCP/Fishery shall be released at once.</li> <li>• The Funds under Breed farm, Night shelter and others shall be released in two phases i.e. 50% in each phase. After a verification report from field level staff, the remaining 50% shall be released.</li> </ul>	<ul style="list-style-type: none"> <li>• The Funds shall be released to Enterprise/ Groups in three Phase i.e. 30%, 30% &amp; 40%</li> </ul>
Capacity building	<p>Annual action plan, half yearly action plan and quarterly action plan is to be prepared by FAs under guidance of the State Professional Agency.</p> <ul style="list-style-type: none"> <li>• The requisition shall be submitted to District IFS Committee on Quarterly basis</li> <li>• Funds are released by CDAO cum PD ATMA as per the approved action plan.</li> <li>• The AAO / AFO/ AHO/ VAS may attend the training programme as per their convenience.</li> <li>• Monthly progress report along with the expenditure detail shall be submitted to the nodal agency.</li> <li>• Funds will be released only after 75% of the expenditure on the earlier releases is made on Capacity building activity.</li> </ul>	
Innovation	<ul style="list-style-type: none"> <li>• The proposal for the innovation shall be prepare and submitted to SPMU by State Professional Agency</li> <li>• After approval of the Proposal Innovation shall be carried out as per the programme and Location</li> <li>• On the proposed sites, CDAO cum PD ATMA or the SPMU member shall be authenticated.</li> <li>• The Funds under Innovation shall be placed to State Professional Agency (SPA) or concerned agencies as per approval of proposal by competent authority</li> </ul>	

Convergence	<ul style="list-style-type: none"> <li>• The Proposal/ Estimate shall be prepared by SPA.</li> <li>• The Proposal shall be approved by District IFS Committee.</li> <li>• The beneficiary selection shall be done by the IFS staff and execution shall be done by the proposed line Department.</li> <li>• Yearly Convergence plan shall be prepared by the District IFS Committee.</li> </ul>
-------------	--

## 11. Project Details

### 11.1 Capacity Building (As per the approved cost norms of Extension Reforms Scheme)

S.N	Type of Training/CB	Level
1	2 Day Cluster Level Residential Trainings for 30 Farmers @ Rs.400/- per farmer	Cluster level
2	5 Day Exposure Visits within State for 30 Farmers Rs.400/- per farmer per day	Within State level
3	4 Day Awareness campaign at cluster level @Rs.20000/- per campaign	Cluster, GP, and Village level
4	1 Day GP Level Non-Residential Trainings for 20 farmers @ Rs.250/- per farmer	Gram Panchayat level
5	2 Day Cluster Level Residential Trainings for 25 farmers @ Rs.400/- per day	Cluster level
6	Two days Awareness Campaign on BYP management	Village level
7	Centralised Capacity Building of SPA	Different level as per requirement

## 12. Process of selection of Facilitating Agency & Farmers Producer Groups

### 12.1 Process Steps for selection of NGOs as Facilitating Agency (FA)

An EoI will be floated from the state or District level for the experienced and interested organizations/agencies for the selected block under Integrated Farming System. Interested Organizations will be required to submit the proposal in the prescribed format in sealed envelope. After the scrutiny of the applications the below steps will be followed.

- The screening Committee shall open the applications.
- It will check for the mandatory criteria against each application.
- It will eliminate the NGOs who don't fulfil the mandatory criteria.
- If more than 3 NGOs qualify the mandatory criterion in a block, further scoring of the NGOs shall be done for that block. District level scoring sheet will be utilised for the same purpose.
- A maximum of 3 NGOs will be shortlisted per block for presentation.
- Shortlisted NGOs shall be requested to make a presentation on a date given by the Collector & District Magistrate.

## 12.2 Process Steps for Selection of FPO/WSHG Federation

An EoI will be floated from the State or District level from the experienced and interested FPOs/CBOs for the selected block under the scheme who will submit the proposal in the prescribed format in sealed envelope to the concerned CDAO cum PD, ATMA office through registry post/Speed post. During the scrutiny of the applications the below steps will be followed.

- a. The screening Committee shall open the applications on the pre decided date.
- b. It will check for the mandatory criteria against each application.
- c. It will eliminate the FPOs who don't fulfil the mandatory criteria.
- d. Shortlisted FPOs shall be invited to present for the document verification on a date given by the CDAO.
- e. The District IFS Executive Committee shall make screening and filed visit for the FPO selection.
- f. After finalizing the Farmer Producer Organization. CDAO cum PD ATMA will move for the approval of Collector & District Magistrate. After the due approval, MoA will be signed between CDAO cum PD, ATMA, NGO(FA) and FPO for Programme implementation.
- g. FPOs formed under Odisha Millets Mission and other programs of Department of Agriculture & Farmers' Empowerment will be given preference in the selection process.
- h. Financial support to FPOs will not be provided from SPPIF scheme, if they are getting financial assistance from OMM or any other schemes.

## 12.3 Process of Gram panchayat (GP) Selection.

The Gram panchayat's under the programme shall selected as per the below mentioned criteria and will be finally approved by the District IFS Committee.

1. GPs covered under APC cluster should not be considered
  2. GPs having more than 50% of Irrigation shall not considered
  3. GPs covered under Corp Diversification through MLIP shall not be considered
- Except these all the GPs shall be covered under SPPIF, preference may be given to the SC, ST dominated population

## 12.4 Staffing Position at FA and FPO level

A.

Level	Position	Nos of Position	Type of Engagement
FA Level	Project Coordinator (Agri&Horti)	1	Full Time
	Project Coordinator (Livestock & Fishery)	1	Full Time
	Chief Functionaries (Part Time)	1	Part Time

B.

Level	Position	Nos of Position	Type of Engagement
FPO Level	Chief Executive Officer (CEO, FPO)	1	Full Time
	Accountant of FPO Full time	1	Full Time

C.

Level	Position	Nos of Position	Type of Engagement
Cluster Level	CRP (Community Resources Person)	6 per Cluster	Full Time
	WSHG- Women self Help Group	1 per GP	Part Time

## 13. Financial Protocols: Funds Release Mechanism

### 13.1 State level

- Annual action plans for the project will be approved by the Director, Agriculture & Food Production, Odisha and will be submitted to Government in A&FE Dept for approval at Govt. level.
- State Professional Agency (PMU) will submit a quarterly plan with budgets (within the yearly plan) to DA &FP(O).
- The funds shall be sanctioned and released based on approved annual action plan to DA & FP for programme implementation as per scheme guidelines.
- Funds for Research-to-Research Secretariat, i.e NCDS shall be released by Directorate of Agriculture and Food Production, Odisha.
- Funds for Programme Facilitation, Centralized Capacity Building, Centralized meetings, Innovation, IT, Participatory Varietal Trials, IEC material, video documentation, State/ National level events, breed characterization, promotion of small and indigenous fish species shall be released to State Professional Agency by DA& directly.
- Funds for all other components shall be released to CDAO cum PD ATMA by Directorate of Agriculture and Food Production as per approved annual action plan.
- CDAO cum PD ATMA in turns shall release funds to Farmers, Vendors, Agencies and FPOs as per approved plans.
- Approval of Collector & District Magistrate needs to be taken for inter-componential transfer at district level. Approval of Director, A&FP should be taken for inter-componential transfer at state level.
- Next instalment of funds shall be released to different stakeholders only after UC and Expenditure Statement of 75% of the expenditure on the earlier releases is made.
- Programme funds will be released to FPOs against the recommendation and relevant documentation of the FAs and recommendation of State Professional Agency.
- Any additional budget component can be added at any time with approval of Govt in A&FE.

1. All funds transfer between DA&FP, NCDS, State Professional Agency, CDAO cum PD ATMA, FA and FPOs will be through NEFT/ RTGS/PFMS/Bank transfer mode only. In case of beneficiary-oriented Programmes, the beneficiaries, incentives may be credited to their bank accounts.

### 13.2 FPO level:

- a. FA will be accountable for financial compliance of funds released to FPO through FPO accountant.
- b. Community Resource Person/ Village Agriculture Worker/ Horticulture Extension Worker/ Livestock inspector and other Departmental support staff will provide technical support to FPOs as required during their scheduled visits.
- c. Expenditure will be based on approved Annual Action Plan. Funds shall be released on progress report submitted as per Annual Action Plans.
- d. The Technical support such as estimate preparation as per standard format, relevant documentation etc for FPOs will be provided by SPA/FAs as per the requirement of District IFS Executive Committee.
- e. FPOs will submit the fund requisition to FAs and FAs will submit the fund request for FPOs to District IFS Executive Committee.
- f. CDAO cum PD ATMA shall release fund as per Approved Annual Action Plan.
- g. Funds are released to FPOs against relevant documentation.
- h. In case any field level check measurement is required, FA will do the field check and submit the details. All construction activity will be Geo-tagged through mobile app.
- i. Departmental officials and officials of State Professional Agency will make field visits for verification. District IFS Committee assigns representative from each Department for field visit.
- j. FA will submit monthly financial expenditure statement of FPO to CDAO cum PD ATMA and State Professional Agency. FA will ensure requisite documentation for the expenditure incurred through FPOs.
- k. FAs will be responsible for submitting Utilization certificates and other financial documentation for programme funds spent by FPOs to CDAO cum PD ATMA.
- l. FPOs accounts will be formally audited and audited utilization certificate will be submitted to CDAO cum PD ATMA through State Professional Agency.

### 13.3 UC Submission at FA/FPO level:

- a. FA will submit an annual action plan and fund shall be released as per the approved annual action plans and recommendation by State Professional Agency and CDAO cum PD ATMA.
- b. FA will submit the documentation required for technical and financial sanction of funds for FPOs.
- c. FA will submit a quarterly plan with budgets (within the yearly plan) to District IFS Committee with a copy to the State Professional Agency. District IFS Committee review of FA's work will be based on the quarterly plan.

- d. FA will submit an annual audited statement of expenditure to District IFS Committee and State Professional Agency at the end of financial year.

### **13.4 UC Submission at State Level:**

- a. The State Professional Agency will submit Annual Action Plan at state level for yearly allocation to the DAFP for all SPPIF Districts.
- b. NCDS/Research secretariat will submit annual action plan to DA&FP.
- c. Fund shall be released on approved annual action plans.
- d. The State Professional Agency and NCDS will submit yearly financial report along with progress report on quarterly basis and an annual audited statement to DAFP. It will submit SoE on monthly basis, relevant financial documents and unaudited UC on six monthly basis to DAFP.
- e. No further fund shall be released unless U.C against earlier released fund is received by DA &FP(O).

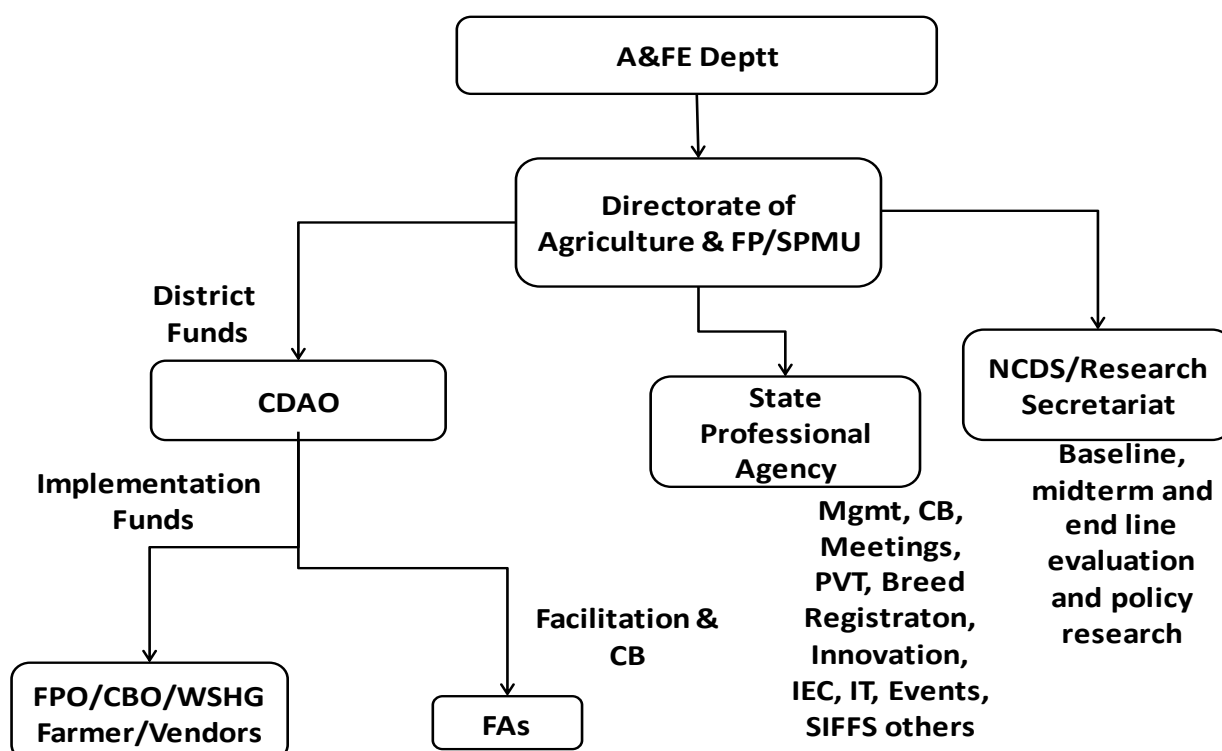
### **13.5 Banking Arrangement:**

Separate interest-bearing bank accounts will be opened each by State Professional Agency (SPA), Research Secretariat, PD ATMA and all other concerned for keeping the funds received for the programme from the concerned authority.

All the interest earned from all the separate interest-bearing bank accounts for the period 1st April to 31st March of a financial year will be transferred to the Director, Agriculture and Food Production (O) by 30th April of the next financial year in shape of Bank Draft in favor of Directorate of Agriculture & Food Production(O) payable at Bhubaneswar to credit the accrued interest in Govt. account.

The programme will be monitored on real time at the State and District level. At the District level, ATMA will conduct Quarterly Review of CBDs/FAs (NGOs) at the end of each Quarter and submit the Quarterly report to the Directorate of Agriculture & Food Production. At the end of 3rd Quarter every year, Director, Directorate of Agriculture & Food Production shall review the utilization of funds of Research Secretariat, State Professional Agency and Project Management Funds as well as of other implementing agencies and approve for drawl of last instalment of fund.

## 14.Fund Flow Diagram



## Indicative Budget Break up of Activities

### Under Special Programme for Promotion of Integrated Farming

This cost structure and quantity mentioned under different activities which are sponsored under SPPIF is indicative in nature. The cost structure of the same may be revised as per the local situation and will be approved by the District IFS EC Committee. This shall be then submitted to SLTC for approval at the State level. Cost norms may be considered revised only after approval of SLTC. The procurement will be done as per procurement procedure of Government.

### A -Agriculture

#### 1. Crop Diversification / Intercropping, Methods

The Activities shall converge with govt approved schemes / programmes like NFSM Food security, Oil seed, MIDH. Additional allocation shall be sourced from SPPIF @9000 /ha if allocation from existing scheme is not sufficient.

## 2. PVT/ Mass Selection

Budget Break up for PVT Exercise for 0.5acre Patch.

SL	Particular	Quantity	Rate (Rs)	Amounts(Rs)
1	Local landrace collection (Min 500gm)		Lumpsu	1000
2	FYM for Nursery	25kg	5	125
3	Main Field Preparation	2 Hrs	900	1800
4	FYM for main field (One tractor load)	1 tractor	Lumpsum	2500
5	Bamboo pegs	50 nos'	2	100
6	Labour for transplanting	6	280	1680
7	Application of Liquid organic manure	2	25	50
8	Bio Pesticide application	2	25	50
9	Labour for weeding (3 times)	10	280	2800
10	Field day for variety selection (banner, food and travel expenses, Resource persons)	30	100	3000
11	Labour for rouging, harvesting, threshing & storage	5	215	1075
12	Rope, thread, wax, label and coloured ruling stick and other contingency.			820
	<b>Total in Rs.</b>			<b>15,000</b>

### 3. Establishment of Mini Seed Centre

The Detail Budget Break up for Seed Centre

Sl No	Item	Specifications	Unit Type	Nos of Units	Unit Cost (Rs)	Total (Rs)
1	Tarpaulin	250 GSM BIS Standard 24*18 in feet Approximate @10kg	Nos	22	1400	30800
2	Digital Moisture Meter	Bench type & moisture measuring range: 0-40% moisture	Nos	2	14000	28000
3	Storage	Rectangular shaped, metallic legs, lockable lid, GI sheet material body with thickness of 0.7mm & capacity storage of 50 kg	Nos	40	1500	60000
		3 Wooden Bench ( 1 ft Hight x1.6ft Width x 6 ft Length)@ 3000 per units	Nos	3	3000	9000
		Iron Reck @ 2000	Nos	1	2000	2000
		Iron Trunk @ 2500 per unit	Nos	1	2500	2500
4	Gunny Bag	Size-44"x26.5" weight-900 gms three blue Strip	Nos	100	80	8000
5	Stitching Machine	ISI marked Auto driven stitching machine with a sewing speed of 5-8 bags per minute	Nos	2	5500	11000
6	Weighing Machine	Load capacity 100 kg, LED Display, rechargeable BIS Marked	Nos	4	11000	44000
7	Miscellaneous	Other arrangement (Internal Decoration Lights, lime wash Register, Seal etc)	LS	1	4700	4700
	<b>Total cost in Rs</b>					<b>200000</b>

#### 4. Seed Production

Indicative Seed Production Cost per (ha) of different crops				
Sl	Crops	Cost of Seed Production (Inorganic)		
			Inorganic (in Rs)	Organic (in Rs)
1	Green gram	Ploughing with own tractor	42762.08	46612.08
		ploughing with own power tiller	41845.88	45695.88
		Ploughing with hired tractor	46563.2	50413.2
2	Black gram	Ploughing with own tractor	42438.88	46288.88
		ploughing with own power tiller	41500.68	45372.68
		Ploughing with hired tractor	46240	50090.00
3	Arhar	Ploughing with own tractor	45533.18	46071.18
		ploughing with own power tiller	44616.98	45154.98
		Ploughing with hired tractor	49334.3	49872.30
4	Horse gram	Ploughing with own tractor	34931.5	38781.50
		ploughing with own power tiller	34015.3	37865.30
		Ploughing with hired tractor	38732.62	42582.62
5	Groundnut	Ploughing with own tractor	83338.38	87188.38
		ploughing with own power tiller	82422.18	86272.18
		Ploughing with hired tractor	87139.5	90989.50
6	Niger	Ploughing with own tractor	35476.08	39326.08
		ploughing with own power tiller	34559.88	38409.88
		Ploughing with hired tractor	39277.2	43127.20
7	Sesamum (Til)	Ploughing with own tractor	34736.52	38586.52
		ploughing with own power tiller	33820.32	37670.32
		Ploughing with hired tractor	38537.64	42387.64

Source: DA & FP vide letter no IS (05) 2/2018-19671 /agril. dated 20.6-2018

## 5. Support for liquid Manure

Budget for liquid manure business By WSHG				
Fixed assets				
SL no	Particular	Unit	Rate (Rs)	Amount (Rs)
1	Plastic drum with tap (200 lt)	5	1000	5000
2	Plastic drum (50 lt )	5	300	1500
3	Bucket	5	200	1000
4	Mug	5	30	150
5	Gamla	5	150	750
6	Weight machine (30kg)	1	3000	3000
7	Funnel	2	50	100
8	Earthen pot	5	200	1000
9	Rake	2	2000	4000
10	Tarpaulin	2	750	1500
	<b>Sub Total</b>			<b>18000</b>
Running cost				
11	Empty bottle/ Packing materials	LS		9000
12	Raw material	LS		5000
13	Stationery, label	LS	2000	3000
	<b>Sub Total</b>			<b>17000</b>
14	House rent @1250/ for 12 months	12	1250	<b>15000</b>
	<b>Grand Total</b>			<b>50000</b>

## 6. Bund Plantations

The Activities shall converge through the approved schemes such as 3344 National Project on Agroforestry/ SMAF / MIDH/NHM. Beneficiary list shall be submitted to the District IFS Committee.

## 7. Support for Establishing Custom Hiring Centre

The FA shall organize meetings to generate the Farmers demand of Agri Equipment's and submit the same to BTT and District IFS Committee for perusal and approval. After approval of the Committee equipment shall be procured as per due procedure of the respective schemes. The Following Schemes shall also be converged,

- I. 2078- Popularisation of Agricultural Implements/ Mechanisation,
- II. 3346- Sub-Mission on Agriculture Mechanisation
- III. 3506- Agriculture Entrepreneurship Promotion Scheme (AEPS) - One stop solution for small holder
- IV. CHC under OLM
- V. ASC under MKUY

## 8. Support for Establishment of Processing Units

The FA shall organize meetings to determine the required marketable surplus commodities and processing units of the cluster. The FA shall submit the required nos of processing units etc. for equipment the follow scheme shall be converged with NFSM, OLM, MIDH- Mission for Integrated development of Horticulture. and for the infrastructure support a proposal shall be submit to the District IFS Committee for availing the support under SPPIF. As per the local situation and processing unit the requirement the proposal shall be prepared under the guidance of the Executive Committee. @500000/- per cluster per Year has been Proposed under SPPIF for infrastructure support.

## 9. Support for Strengthen the Block level FPO

The Cost for FPO shall be released to Respective FPO as per the approved instalment .The Detail budget break up is given below.

S.No	Budget Component	Units Cost per month (Rs)	Units	Amount (Rs)
1	CEO Full Time	20000	12	240000
2	Accountant cum Data Manager	15000	12	180000
	<b>Office Administration Cost</b>			
3	Office Rent	3000	12	36000
4	Communication (Telephone & Internet)	2500	12	30000
5	Office maintenance	1000	12	12000
6	TA of (CEO & Accountant)	5000	12	60000
7	Audit Cost of CBO	LS	1	10000
	<b>Total in Rs</b>			<b>568000</b>

## 10. Development & Printing of IEC Materials

The SPA is responsible for developing the project design of the IEC materials on SPPIF programme. Fund provision of @ Rs50,000/- per cluster for entire project period is made. The IEC material will be printed centrally by the JDA (Information) or as per the decision of SLCIC.

## 11. Video Documentation of Programme- Cases Studies

The SPA will develop story, script & timeline for the activities under SPPIF. The Details of video documentation shall be submitted to SPMU for perusal. Fund required Video documentation of Initial phase and end line output along with the case study @ 1,00,000/- per cluster for the entire project period.

## **B. Horticulture:**

### **12. Support for Micro Irrigation System**

The Activities shall converge with govt approved schemes / programmes like PMKSY, OAIC, OLIC. Any other as per approved by the government.

### **13. Support for Trellis System of Vegetable Cultivation**

The cost norms of RKVY @12550/- shall be followed. Detail estimate shall be prepared by SPA and submit DDH for perusal and Approval.

### **14. Support for Vegetable Cultivation, Supply of seed /sapling, Fertilizer, bio-Inputs etc.**

The beneficiary list shall be selected and submitted to the District IFS Committee. The convergence shall be made as per the approved norms of schemes such as MGNREGA/OLM (Backyard kitchen garden (Dietary Diversity)/Support to WSHGs on bank linkages) MIDH etc. DDH shall ensure the convergence activities.

### **15. Agro-forestry Model/ Adarsha Bagicha**

Under the Adarsha Bagicha beneficiary shall be approved in Gram Sabha and the approved list shall also be submitted to District IFS Committee for further convergence with watershed and allied Department. The required sapling shall be sourced from DSC&WD/ DoH. The funds shall be used for Sapling, and Pitchers.

#### **Details of Adarsha Bagicha budget break up**

<b>ABSTRACT OF EXPENDITURE FOR ONE ACRE MODEL OF ADARSHA BAGICHA ( IN RUPEES)</b>					
<b>Sl no</b>	<b>Component</b>	<b>1st year(Rs)</b>	<b>2nd year(Rs)</b>	<b>3rd year(Rs)</b>	<b>Total(Rs)</b>
1	Labour	60354.07	27305.00	27305.00	114964
2	Material	41701.80	13938.53	13938.53	69579
3	Beneficiary	13975.00	13975.00	13975.00	41925
	<b>Total</b>	<b>116030.87</b>	<b>55218.53</b>	<b>55218.53</b>	<b>226468</b>
	<b>Total in Lakh Rs</b>	<b>1.16</b>	<b>0.55</b>	<b>0.55</b>	<b>2.26</b>

<b>MODEL ESTIMATE OF ADARSHA BAGICHA, A INTEGRATED AGRO-HORTYI-FORESTRY MODEL UNDER MGNREGA FOR 1st YEAR 2020-2021</b>								
	<b>Area for 1 acre</b>							
<b>Sl no</b>	<b>Component</b>	<b>Unit</b>	<b>Rate</b>	<b>quantity per unit</b>	<b>Total Amount</b>	<b>W.C</b>	<b>N.WC</b>	<b>Remarks</b>
<b>1</b>	<b>Land development</b>							
<b>a</b>	Cleaning of shrubs , uprooting of stumps and remove of plant residues from the site/land levelling	mds	215	24	5160	5160		<b>MGNREGA</b>
<b>2</b>	<b>Contour Trench and Fencing</b>							<b>MGNREGA</b>
<b>a</b>	Discontinuous trench fencing of size (0.90 +0.60)/2 x.75mx270 m= <b>151.88 cum</b>	mds	215	80	17200	17200		<b>MGNREGA</b>
<b>b</b>	Life fencing in the ridge of the trench- <b>280m</b>	mds	215	35	7525	7525		<b>MGNREGA</b>
<b>c</b>	Contour trench across the slope( 0.60m+0.45m) / 2 x0.6m x36.0m = <b>22.68 cum( 2 nos of Trench @11.34 cum)</b>	mds	215	12	2580	2580		<b>MGNREGA</b>
<b>3</b>	<b>Plantation</b>							<b>MGNREGA</b>
	Lay out and demarcation							<b>MGNREGA</b>
<b>a</b>	Peripheral plantation (140 plant)	mds	215	1	215	215		<b>MGNREGA</b>
<b>b</b>	Forestry plant section 1 (126 nos plant)	mds	215	1	215	215		<b>MGNREGA</b>
<b>c</b>	Horticultural plant section -2 (52 nos of plant)	mds	215	1	215	215		<b>MGNREGA</b>
<b>4</b>	<b>Digging of pits</b>							
<b>a</b>	a- Peripheral plantation (140 plant @ 0.09m3) (0.45m X 0.45m X 0.45m)= 12.76m3	mds	215	7	1505	1505		<b>MGNREGA</b>
<b>b</b>	b- Forestry plant section 1 (126 nos plant @ 0.09m3) (0.45m X 0.45m X 0.45m)= 11.48m3	mds	215	6	1290	1290		<b>MGNREGA</b>

<b>c</b>	c- Horticultural plantation (section-2) 52 nos. Mango and Sapota (17 @ 0.75 m <sup>3</sup> =12.82 m <sup>3</sup> )=( 0.91m X 0.91m X 0.91m ) , K. lime, guava, C. apple (9 @ 0.22 m <sup>3</sup> = 1.95 m <sup>3</sup> ) =(0.60m X 0.60m X 0.60m), Papaya , drumstick etc(26 @ 0.09m <sup>3</sup> = 2.34m <sup>3</sup> )= 0.45m X 0.45m X0.45m	mds	215	10	2150	2150		MGNREGA
<b>5</b>	<b>Mixing organic manure with soil and filling of pits</b>							
<b>a</b>	Peripheral plantation (140plant)		215	3	645	645		MGNREGA
<b>b</b>	Forestry plant section 1 (126 nos plant)		215	3	645	645		MGNREGA
<b>c</b>	Horticultural plant section -2 (52 nos plant)		215	4	860	860		MGNREGA
<b>6</b>	<b>Planting of seedling and watering</b>							
<b>a</b>	a- peripheral plantation (140plant)		215	5	1075	1075		MGNREGA
<b>b</b>	b- Forestry plant section 1 (126 nos plant)		215	3	645	645		MGNREGA
<b>c</b>	c-Horticultural plant section -2 (52 nos plant)		215	2	430	430		MGNREGA
<b>7</b>	<b>Hoeing weeding &amp; application of manure (2 times)</b>							
<b>a</b>	a- peripheral plantation (140plant)	mds	215	10	2150	2150		MGNREGA
<b>b</b>	b- Forestry plant section 1 (126 nos of plant)	mds	215	6	1290	1290		MGNREGA
<b>c</b>	c-Horticultural plant section -2 (52 nos plant)	mds	215	6	1290	1290		MGNREGA
<b>8</b>	<b>Collection of organic mulching material and mulching</b>	mds	215	5	1075	1075		MGNREGA
<b>9</b>	<b>Watch &amp; ward maintenance and irrigation (7month @ weekly 2 times )</b>	mds	215	65	13975	13975		Beneficiary contribution
<b>10</b>	<b>Cost of Seedling</b>							
<b>a</b>	Peripheral plantation (140plant with transportation)	nos	30	140	4200		4200	SPPIF

<b>b</b>	Forestry plant section 1 (126 nos plant with transportation)	nos	30	126	3780		3780	<b>SPPIF</b>
<b>c</b>	Horticultural plantation (section-2) 52 nos. Mango 10 nos @40 /, Sapota graft 5 nos @160 /K. lime seedling 5 nos @ 30/, guava gooty 5 nos @85/, Papaya 10nos @30 /, drumstick 5nos @ 30/ C. apple 7nos @30 / and Coconut 3 nos @110/ and Banana 2 nos@ 15 /-	nos			2795		2795	<b>SPPIF</b>
<b>11</b>	Cost of organic manure	kgs	11.5	344	3956		3956	<b>SPPIF</b>
<b>12</b>	Plant protection forestry plant (Green mesh)	nos	40	266	10640		10640	<b>SPPIF</b>
<b>13</b>	Irrigation charges (earthen pitcher)	nos	50	52	2600		2600	<b>SPPIF</b>
<b>14</b>	Tree guard for horticulture plant	nos	160	59.49	9518.4		9518.4	<b>SPPIF</b>
<b>15</b>	Cost of sprayer	nos	250 0	1	2500		2500	<b>SPPIF</b>
<b>16</b>	Drum for preparation of liquid manure	nos	586	1	586		586	<b>SPPIF</b>
<b>17</b>	Wages to Mate	MD s	348	10	3480		3480	<b>MGNREGA</b>
<b>18</b>	Provision for Drinking Water	MD s	215	5	1075	1075		<b>MGNREGA</b>
<b>19</b>	Provision for cretch facilities	MD s	215	5	1075	1075		<b>MGNREGA</b>
<b>20</b>	Provision for Rest Shed	LS			500		500	<b>MGNREGA</b>
<b>21</b>	Photographs	LS			300		300	<b>MGNREGA</b>
<b>22</b>	Provision for First Aid Box	MD s			500		500	<b>MGNREGA</b>
<b>23</b>	Sign Board	LS			3000		3000	<b>MGNREGA</b>
				<b>TOTAL</b>	<b>112640.4</b>	<b>64285</b>	<b>48355.4</b>	
	<b>Miscellaneous-1%</b>				1126.404		MGNREGA	
	<b>Labourcess-1%</b>				1137.67		MGNREGA	
	<b>Price Escalation -1% (If Material price increases)</b>				1126.40		SPPIF	
	<b>Grand Total</b>				<b>116030.87</b>	<b>64285</b>	<b>51745.87</b>	
	<b>Or say</b>				<b>116031</b>	<b>64285.</b>	<b>51746</b>	
	<b>SPPIF Share</b>			41701.80				
	<b>MGNREGA Share</b>			60354.07				
	<b>Beneficiary Contribution</b>			13975.00				

MODEL ESTIMATE OF ADARSHA BAGICHA, A INTEGRATED AGRO-HORTYI-FORESTRY MODEL UNDER MGNREGA FOR- 2ND YEAR & 3rd Year								
Area 1 acre , Peripheral length-280mt(100+40)x2								
Sl no	Component	Unit	Quantity	Rate	Amount	W.C	N.W.C	Remarks
<b>1</b>	<b>Labour Component</b>							
<b>a</b>	Repair of fencing	mds	10	215	2150	2150		MGNREG A
<b>2</b>	<b>Plantation</b>							
<b>2.1</b>	<b>Digging of pits</b>							
<b>a</b>	Pine apple plantation (280 @ 0.027cum ) = (0.30m x 0.30m x 0.30m)	mds	4	215	860	860		MGNREG A
<b>b</b>	Gap filling Peripheral (0.45m x 0.45m x 0.45m) (14 @ 0.09cum)	mds	1	215	215	215		MGNREG A
<b>c</b>	Gap filling forestry (0.45m x 0.45m x 0.45m) (13 @0.09 cum)	mds	1	215	215	215		MGNREG A
<b>3</b>	<b>Gap filling horticulture:</b>							
<b>a</b>	Mango and Sapota(0.91m X 0.91m X 0.91m ) x 1nos	mds	1	215	215	215		MGNREG A
<b>b</b>	K. lime , Guava, C .apple(0.60 X 0.60 X 0.60m ) x2 nos	mds	1	215	215	215		MGNREG A
<b>4</b>	<b>Manure mixing and filling of pits and planting</b>							MGNREG A
<b>a</b>	Pine apple plantation	mds	6	215	1290	1290		MGNREG A
<b>b</b>	Gap filling Peripheral.	mds	1	215	215	215		MGNREG A
<b>c</b>	Gap filling forestry	mds	1	215	215	215		MGNREG A
<b>d</b>	Gap filling horticulture	mds	1	215	215	215		MGNREG A
<b>5</b>	<b>Hoeing, Weeding, Earthening &amp; application</b>	mds						
<b>a</b>	Pineapple plantation	mds	4	215	860	860		MGNREG A
<b>b</b>	Peripheral.	mds	10	215	2150	2150		MGNREG A
<b>c</b>	Forestry	mds	6	215	1290	1290		MGNREG A
<b>d</b>	Horticulture	mds	6	215	1290	1290		MGNREG A
<b>e</b>	Mulching of fruit plant	mds	5	215	1075	1075		MGNREG A
<b>F</b>	Watch and ward, maintenance and irrigation.	mds	65	215	13975	13975		Beneficiary
<b>6</b>	<b>Material Component</b>							
<b>a</b>	Cost of planting materials							
<b>b</b>	Pineapple sucker including 5% mortality	Nos	294	5	1470		1470	SPPIF

c	Forestry seedling for peripheral	Nos	14	30	420		420	SPPIF
d	Forestry seedling for forest plantation	Nos	14	30	420		420	SPPIF
e	Horticulture plant	Nos	3	45	135		135	SPPIF
7	<b>Organic manure</b>						0	SPPIF
a	Pineapple plantation	kgs	70	11.5	805		805	SPPIF
b	Peripheral	kgs	140	11.5	1610		1610	SPPIF
c	Forestry	kgs	126	11.5	1449		1449	SPPIF
d	Horticulture plant	kgs	52	11.5	598		598	SPPIF
e	Vegetable seeds ,millets ,root and tubers	LS			3708.54		3708.54	SPPIF
f	Plant protection	LS			2884.54		2884.54	SPPIF
8	Wages to Mate	MD s	5	348	1740		1740	MGNREG A
9	Provision for Drinking Water	MD s	2	215	430	430		MGNREG A
10	Provision for cretch facilities	MD s	2	215	430	430		MGNREG A
11	Provision for Rest Shed	LS			500		500	MGNREG A
12	Photographs	LS			300		300	MGNREG A
13	Provision for First Aid Box	mds			500		500	MGNREG A
			<b>TOTAL</b>		43845.08	27305	16540.08	
	<b>Miscellaneous-1%</b>				438.4508			MGNREG A
	<b>Labourcess-1%</b>				442.84			MGNREG A
	<b>Price Escalation -1% (If Material price increases)</b>				438.45			SPPIF
	<b>Grand Total</b>				45164.82	27305	17859.82	
			<b>or say</b>		<b>45165</b>	<b>27305</b>	<b>17860</b>	
	<b>SPPIF Share</b>		13938.53					
	<b>MGNREGA Share</b>		17251.29					
	<b>Beneficiary Contribution</b>		13975.00					

The above estimate and rate are indicative and will be revised from time to time basing on the labour rate and cost of material as approved by Director of Soil Conservation and Watershed Development which will be further approved by SLCIC.

## 16. Producer Group Promotion

Wherever existing PGs formed by APC project or ORMAS or others are available and are involved in regular business activities for more than 6 months, they shall be involved in the project activities. Wherever PGs are either not formed or not functional, new PGs shall be

formed with interested farmers. Based on the business plan, maximum working Capital of Rs 3.0 lakh per newly formed PG in two tranches of Rs1.0 lakh and Rs2.0 lakh respectively shall be provided through SPPIF as per the SOP.

## C. Livestock

### 17. Goat Shelter construction

The goat shelter construction shall be taken up under Livestock components of SPPIF programme. Beneficiaries may be encouraged to build medium size shelter through the beneficiary's contribution.

SL	Description of the Item	Quantity	Unit	Rate(Rs)	Amount(Rs)
1	Earth work excavation in hard soil or, gravely soil within 50m initial lead and 1.5 m lift with breaking clods to maximum 5cm to 10cm and laying in layers not exceeding 0.3 m depth as per direction of engineer in charge.	0.49	cum	176.48	86.48
2	Sand filling in foundation and plinth with approved river sand well-watered and ramming GST cost & conveyance as per the direction of engineer in charge.	0.12	cum	455.51	54.66
3	Cement concrete (1:4:8) using 40mm size CBHG metal including watering & curing, cost with GST & conveyance as per the direction of engineer in charge.	0.12	cum	4377.4	525.28
4	C.B. brick missionary in c.m.(1:6) including watering and curing with cost, conveyance, royalty and all labour, T&P etc complete as per the direction of engineer in charge.	0.88	cum	4668	4107.9
5	12 mm thick cement plaster in c.m.(1:6) over brick work with cost all labour and T&P etc.complete as per the direction of engineer in charge.	9.55	sqm	137.42	1312.4
6	Fixing Wire netting or welded mesh in wall including screw and Nails.	17.26	cum	40.58	700.41
7	Supplying, Fitting & fixing A.C .sheet roofing including fixing of ridges wind ties etc. complete but excluding cost of fittings including drilling holes in wind ties as per the direction of engineer in charge.	9.45	SQM	376.71	3559.9
8	Wall painting two coats with weather coat paint of approved shade on new work including cost of paint per 1 sqm	9.55	SQM	73.4	700.97
9	Wire mesh (11.28 m X 1.53 m )	17.26	SQM	191.28	3301.5
10	Ms pipe (40mm OD) for purlin and fixing in the intermediate wall	16.9	KG	70	1183
11	Cost of J hooks and Washer, Binding wire, Nails and bituminous washer	1.4	Kg	95	133
12	Cutting, Threading and Welding of MS pipe	1	Piece	60	60
13	Transportation of AC Sheet, Wire mess, MS Rod, Ridges and J hooks		LS	100	100
14	Flex for Display		LS	100	100
15	Add 2% for contingency, price escalation, T&P and unforeseen item .		LS		318.51
			Total		16244
	<b>Beneficiary share Contribution</b>				4244
	<b>Programme Share</b>				<b>12000</b>

## 18. Large Goat Shelter Construction

The large size goat shelter shall be promoted through convergence with Govt scheme such as MGNREGS. Also, financial assistance of an amount of Rs.49000/- per beneficiary shall be extended under Government scheme. The Cost may vary as per the MGNREGA Prices and guidelines.

## 19. Support for Establishment of Indigenous chick production unit.

Establishment of indigenous chick production unit at community level and individual night shelter shall be taken up under livestock component of SPPIF programme.

**Detail Budget break up of indigenous chick production unit**

SL NO	Particulars	No's of Unit	Unit cost (Rs)	Total project cost (Rs)
1	Layers (4 months) (40) + Cocks (10)	50	400	20000
2	Fencing	0.5	11000	5500
3	Supplementary Feed & Vaccination cost	200	50	10000
4	Breed farm	1	78742	78742
5	Egg laying box / pot etc(Bamboo)	8	125	1000
6	Feeders (5 KG)	8	325	2600
7	Drinkers (10 Lt)	8	400	3200
9	Hafa (Bamboo) for Chicks	8	200	1600
10	Plants and Vegetable Seeds	10	50	700
11	Azola Pit	1	2000	2000
12	Name Plate and Mis	1	257.68	257.68
13	Bamboo	5	200	1000
14	Earthen Pot	10	150	1500
	<b>Total Amount</b>			<b>128100</b>

## 20. Support for Poultry Night Shelter

POULTRY -BREAKUP					
Sl	Description Of Item	Quantity	Unit	Rate(Rs)	Amount(Rs)
<b>1</b>	<b>VENDOR MATERIAL DETAILS</b>				
a	Ac sheet (2.25 x 1.05 m)- <b>2nos</b>	4.73	sqm	210.00	993.30
b	Cement	2.00	Bag	342.08	684.16
c	J hooks and Washer	0.60	KG	95.00	57.00
d	Nails	0.10	KG	95.00	9.50
e	Binding Wire	0.30	KG	80.00	24.00
f	Bituminous Washer Packet	0.20	Pkt	35.00	7.00
g	Welded mesh (6.10 x 1.06) m	6.47	sqm	189.34	1225.03
				<b>Total</b>	<b>2999.99</b>
<b>2</b>	<b>CONSTRUCTION MATERIAL</b>				
a	Sand	0.46	cum	449.86	206.94

b	Brick ( 25cm x 12cm x8cm )	247.00	Nos	4.92	1215.24
c	Metal (40 mm)	0.12	cum	1388.29	166.59
				<b>Total</b>	<b>1588.77</b>
<b>3</b>	<b>LABOUR DETAILS</b>				
a	Unskilled Labour	6.00	nos	315	1890
b	skilled Labour	1.50	Nos	405	607.5
c	Highly skilled Labour	1.00	Nos	465	465
				<b>Total</b>	<b>2962.5</b>
<b>4</b>	<b>Miscellaneous</b>				
a	Transportation of AC Sheet, Wire mess, MS Rod, Ridges and J hooks				50.00
b	Flex for Display				50.00
c	Add 2% for contingency, price escalation, T&P and unforeseen item.				164.41
d	Overhead charges and labour cess				569.07
				<b>Grand Total</b>	<b>8384.74</b>
				<b>or say</b>	<b>8384.74</b>
	SPPIF Share	<b>2999.99</b>			
	Farmers Share	<b>5384.75</b>			

## 21. Support for Poultry Vaccine - One time Support

Onetime financial support of an amount of Rs.3000/- per beneficiary shall be availed to farmer towards poultry vaccine under SPPIF livestock component.

## 22. Support for poultry Vaccine Cold Chain Management

support of Rs 12500/- per unit towards procurement of poultry vaccine carrier and mini refrigerator shall be provided under SPPIF. There will be a maximum of 3 Nos of units per cluster.

SL	Equipment name	Unit Cost (Rs)	Nos of Units	Amount (Rs)
1	Vaccine ICE Box	1500	1	1500
2	Cutter	250	1	250
3	Scissors	250	1	250
4	Tetracycline	77	2	154
5	Bandage	50	4	200
6	Ointment	146	1	146
7	Refrigerator	10000	1	10000
		<b>Total</b>		<b>12500</b>

### **23. Establishment of Goat rearing unit through SHG**

Establishment of goat rearing unit through SHG shall be taken up in SPPIF cluster in convergence with Integrated Livestock development programme-78694 small animal development centre.

Total unit Cost -100% - - - 230000/-	State Share- 50% -----Rs115000/- SPPIF Share- 25%----- Rs 57500/- WSHG share- 25% -----Rs 57500/- (Subsidy/Assistance limited to 75 %)
--------------------------------------	---

### **24. Backyard Duck rearing**

Backyard Duck rearing will be promoted through convergence with scheme such as Encouragement of commercial poultry entrepreneur and promotion of Backyard Poultry Production. Financial assistance of Rs.4000/- per beneficiary shall be provided under above mentioned DAH&VS scheme.

### **25. Azolla cultivation**

Azolla cultivation shall be taken up in convergence with Fodder development Scheme in SPPIF cluster. Financial assistance of Rs.2000/- per beneficiary shall be provided under above mentioned DAH&VS scheme.

### **26. Enrichment of Crop residue**

Enrichment of Crop residue shall be taken up in convergence with Fodder development Scheme in SPPIF cluster. Financial assistance of Rs.2200/- per beneficiary shall be provided as per the approved scheme under DAH & VS.

### **27. Commercial poultry enterprise through Broiler farming in dip litter system**

Commercial poultry enterprise through Broiler farming in dip litter system will be promoted through convergence with scheme such as Encouragement of Commercial Poultry Entrepreneur and promotion of Backyard Poultry Production. Additional financial assistance of 20% may be provided per WSHG (entrepreneur) under SPPIF subjected to approval by District IFS Committee in addition to the DAH&VS Scheme assistance of 40%.

Total unit Cost -100% - - - 180000/-	State Share- 40% -----Rs 72000/- SPPIF Share- 20%-----Rs36000/- WSHG share- 40% -----Rs72000/-
--------------------------------------	--

## **28. Promotion of Perennial Fodder cultivation**

Promotion of Perennial Fodder cultivation shall be taken up in convergence with Fodder development Scheme in SPPIF clusters.

## **29. Promotion of seasonal fodder cultivation**

Promotion of seasonal fodder cultivation shall be taken up in convergence with Fodder Development Scheme in SPPIF cluster. Seed kit shall be provided as per approved scheme under DAH&VS to the selected beneficiary.

## **30. Native Species Breed characterization with support of ICAR-NBAGR (Prg.Section)**

The activity Native Species Breed characterization with support of ICAR-NBAGR (Prg.Sec) shall be taken up. The cost norms shall be followed as per the Approved cost norms of DAH & VS.

## **D-FISHERY**

### **31. Farm Pond @150000/- per Unit**

Under this component creation of additional freshwater for fisheries shall be taken up to promote fish production in the rural areas. Individual beneficiary-oriented farm pond shall be excavated in convergence with MGNREGS.

Model	Specification of Farm Pond	Unit Cost for Fish Seed (in Rs)	Subsidy Assistance (Rs.)	
			General (40%)	SC/ST/Women (60%)
1	20m x 20m x 3m	6000	2400	3600
2	15m x 15m x 3m	3000	1200	1800
3	10m x 10m x 3m	1500	600	900

### **32. Support for quality fish seed supply, packaging, and distribution to be undertaken in existing water bodies not covered under MGNREGA**

Fish seed, a major input in Pisciculture which is the primary determinant of total fish seed production and the net profit gain. Identified beneficiaries will be provided with incentives for Seed. At present Government of Odisha provides subsidy for procuring fish seeds, feed and net @ 40% for General and @ 60% for SCs/STs/Women farmers in a single cycle as per the guidelines of the scheme “Input assistance to Develop Network of Fish Seed Grower for Early Bred Spawn”. For ensuring adequate supply of seeds, a network of local seed growers will be developed and linked with the Department of Fisheries.

Sl No.	Item	Unit Cost per acre RS in Lakhs	Government Assistance Per Acre (Rs. In Lakhs)	
			General (40%)	SC/ST/Women (60%)
1.	Input cost for one crop cycle of fish fingerling production (fry, feed, bio security bird fence net, seed harvest drag net etc.)	1.00	0.40	0.60
Detailed Unit Cost per Acre Fish seed rearing for production of fry and fingerlings from spawn (8 lakh fry and 1 lakh fingerling production per Acre in 3-4 month seed rearing cycle)				

Sl No.	Items	Units	Unit Cost (Rs.)	Total Cost (Rs.)	Subsidy for General @ 40% (Rs.)	SC/ST/ Women @60% (Rs.)
1	Spawn or Fry	30 lakh spwan / 1.50 lakh fry	30,000	30,000	12,000	18,000
2	Powder / Pellet feed	600 kg	60	36,000	14,400	21,600
3	Bio security Bird fencing net	1 lump sum	16,000	16,000	6,400	9600
4	Seed harvest drag net	1 lump sum	18,000	18,000	7,200	10,800
	<b>Total</b>			1,00,000	40,000	60,000

### 33. Support for Quality Fish Seed Stocking (Fingerling / Yearling)

Assistance in the form of subsidy shall be provided to farmers with existing ponds. Adequate amount of feed supply to Fingerling / Yearling will be ensured. Rearing of Fingerlings/Advanced fingerlings shall be encouraged with an incentive of Rs 3000/- per Acre. The cost may differ as per the location & district.

### 34. Support for Establishment of Nano Fish Feed Mixture unit

Nano fish feed production units shall be established through the SPPIF programme on a small scale for local farmers @ Rs 150000/- per cluster basing upon the feasibility.

SL	Raw Materials	Per Unit	KG/Unit	Cost per unit(Rs)	Amount(Rs)
1	Nano fish feed mixture unit	Machinery	1	65000	65000
2	Raw Materials for feed mixture unit	LS			46440
3	Support for established the feed mixture unit ( 15'10' Shed)	Machinery	1	20000	20000
4	Installation (Electrification and other internal arrangement of feed mill )	LS	1	10000	10000
5	Miscellaneous (feed mixture unit Installation, Tarpaulin 18/14, Plastic Bag, etc)	LS		8560	8560
				<b>Total</b>	<b>1,50,000</b>

### 35. Support for Promotion of Indigenous Fish Species Culture

Assistance is provided for procurement of Mola seeds @25 kg/Ha (Rs 400/Kg)to WSHGs as a part of Input assistant to WSHGs for Pisciculture in GP tanks Scheme. Subsidy provision shall be made for culture of indigenous fish species.

Sl. No	Items	Units	Unit Cost (Rs)	WSHGs Contribution (Rs)	Government Assistance (Rs)	Total Cost (Rs)
<b>A</b>	<b>Operational Cost</b>					
1	Pond Dyke repair, de-weeding and sludge removal	1	5000.00	5000.00	-	5000.00
2	Water Management Cost (Water pumping, Fertilisers Lime)	1	5000.00	5000.00	-	5000.00
3	Carp advanced fingerling 50-100g.size including transportation.	2700 nos.	12.50	-	33750.00	33750.00
4	Mola seed	25kg	400.00	-	10000.00	10000.00
5	Formulated pellet feed (28% crude Protein and3% Fat)(@ FCR1:1.1)	2700 kg	32.00	40150.00	46250.00	86400.00
6	Farm labour and Harvesting Cost	1	9850.00	9850.00	-	9850.00
	<b>Total Operational Cost</b>			<b>60000.00</b>	<b>90000.00</b>	<b>150000.00</b>

### 36. Harvesting of marketable fish.

To enable the beneficiaries for utilising fishing equipment and techniques, Nets and other gear should be available on hiring basis. Nets and gears should be kept under the Custom Hiring centre and should be availed by the stakeholders as per the requirements. The number of nets may be as per the local demand of the Farmers and approved by the DFO. Govt. of Odisha provides assistance for fishing nets with all fittings @ 40% of the unit cost of Rs 50000/- under the scheme Popularisation of Fishery Machinery/ Equipment's/ Implements" for Intensive Aquaculture. SHGs shall be selected in consultation with the Department of Mission Shakti and Department of Fisheries.

<b>Unit Cost and Pattern of Assistance for the Fishery Equipment's/ Machinery/ Implements</b>				
Sl. No.	Component	Maximum Units per Farmer	Tentative Unit Cost (Rs.)	Maximum Admissible Subsidy per unit or 40% of the Unit Cost Whichever is less (Rs.)
1	Aerators			
i)	Aerators-1 HP	4	25,000	10,000
ii)	Aerators-2HP	6	40,000	16,000
2	Air Blowers			
i)	Air Blowers - 5HP	1	70,000	28,000
ii)	AirBlowers-10HP	1	1,20,000	48,000
3	Fishing Nets with all fittings	1 (300Ft)	50,000	20,000
4	Bio-Security Nets	1(Lump-sum)	20,000	8000
	Total		3,25,000	1,30,000

# NON-PROGRAMME COST FOR AGRICULTURE, HORTICULTURE, LIVESTOCK AND FISHERY COMPONENT

## 1. Summary of different capacity building activities implemented by different stakeholders

S.No	Type of Training/CB	Level
1.	2 Day Cluster Level Residential Trainings for 30 Farmers @ Rs 400/- per farmer/day	Cluster level
2.	5 Day Exposure Visits within State for 30 Farmers @Rs 400/- per farmer per day	Within State level
3.	4 Day Awareness campaign at cluster level @Rs 20000/- per campaign	Cluster, GP and Village level
4.	1 Day GP Level Non-Residential Trainings for 20 farmers @ Rs 250/- per farmer	Gram Panchayat level
5.	2 Day Cluster Level Residential Trainings for 25 farmers @ Rs 400/- per day	Cluster level
6.	Two days Awareness Campaign on BYP management	Village level
7	Centralised Capacity Building of SPA	Different level as per requirement

## 2. Details of thematic wise different capacity building programme

SINos	Activities	Units	Unit Cost (Rs.)
	<b>Agriculture Component</b>		
	<b>CAPACITY BUILDING COSTS ( 50% of the Participants in all trainings shall be women )</b>		
1	2 Day Cluster Level Residential Trainings for 30 farmers@ Rs 400/- per farmer/day	Cluster	24000
2	5 Day Exposure Visits within State for 30 Farmers Rs 400/- per farmer per day	Cluster	60000
3	1 Day GP Level Non-Residential Trainings for 20 farmers @ Rs 250 per farmer	GP	5000
4	4 Days awareness campaign on improved agronomic practices, value chain, market linkage of agri. Products.	Cluster	20000
	<b>Horticulture Component</b>		
	<b>CAPACITY BUILDING (50% of the participants in all trainings shall be women)</b>		
1	2 Day Cluster Level Residential Trainings for 30 Farmers @ Rs 400/- per farmer/day	Cluster	24000
2	Exposure Visits within State for 30 Farmers for 5 days @ Rs 400/- per farmer per day	Cluster	60000
3	1-day Non-Residential GP Level Trainings for 20 farmers @Rs 250/- per day per farmer	GP	5000

	<b>Livestock Component</b>		
	<b>CAPACITY BUILDING (50% of the participants in all trainings shall be women)</b>		
1	2 Day Residential Training at cluster level for 20 Vaccinators	vaccinator	16000
2	4 Days Awareness and Vaccination campaign for vaccination	Camp-Campaign	20000
3	2 Day Cluster Level Residential Trainings for 30 farmers @ Rs 400/- per day	Cluster	24000
4	Two days Awareness Campaigns on BYP	Cluster	12500
5	5 Day Exposure Visits outside State for 20 Farmers Rs 800/- per farmer per day	Cluster	80000
6	1 Day GP Level Non-Residential Trainings for 20 farmers @ Rs 250/- per farmer	GP	5000
7	Preventive Healthcare & Support, documentation.	Village	500
	<b>Fishery Component</b>		
A	<b>CAPACITY BUILDING COSTS (50% of the participants in all trainings shall be women)</b>		
A	1 Day Non-Residential Training for 20 Farmers @Rs 250/- per farmer per day	Per Cluster	5000
B	2 Day Residential Training for 25 Farmers @Rs 400 per farmer per day	Cluster	20000

**\*\* All the Capacity Building cost shall be in accordance to the cost norms of Extension reforms and OMM schemes from time to time.**

### 3.RFS (Rearers' Field School)

RFS shall be Conducted once in every Quarter 25 no's of village shall be focused in each cluster. The Record Observation, Health Care and Support System of each RFS shall be maintained by the Facilitating Agency.

Sl	Particulars	Units	Rate (Rs)	Period	Amount (Rs)
1	RP fees LI/AVAS/Technical Person	1	500	2	1000
3	Banner	1	400	1	400
4	Fooding (Lunch @80 per person)	40	80	1	3200
6	Miscellaneous	1	900	1	900
<b>Total</b>					<b>5500</b>

### 4.Details of capacity building component along with its Module of training

Sl. No.	Activities	Topic to be Covered
	<b>AGRICULTURE</b>	
A	<b>CAPACITY BUILDING COSTS (50% of the participants in all trainings shall be women)</b>	
	<b>2 Day Cluster Level Residential Trainings for 30 farmers</b>	

Sl. No.	Activities	Topic to be Covered
A.1	Training and Capacity Building on Crop Water Budgeting, Protective Irrigation and Water Management	<ol style="list-style-type: none"> <li>1. Crop failure issues</li> <li>2. Crop wise water requirement</li> <li>3. Crop diversification options</li> <li>4. Crop water budgeting</li> <li>5. Water sharing protocols and management</li> </ol>
A.2	Training on Crop Diversification, need for crop diversification, difference between monoculture and multiple cropping, crop calendar, techniques in different multi-cropping models, benefits of crop diversification etc.	<ol style="list-style-type: none"> <li>1. Different types of cropping options</li> <li>2. Seed treatment</li> <li>3. Sowing/Transplanting process</li> <li>4. Intercultural operations</li> <li>5. Pest management</li> </ol>
A.3	Training of Seed Producers, Benefits and characteristics of quality seed, classes of quality seed, seed Treatment, seed standard FAQ, Quality seed production and harvesting techniques, and seed preservation techniques etc.	<ol style="list-style-type: none"> <li>1. Concept of seed production</li> <li>2. Seed treatment</li> <li>3. Isolation distance and other seed production protocols.</li> <li>4. Rouging</li> <li>5. Harvesting</li> <li>6. Seed processing and quality management</li> <li>7. Bagging, Tagging and Storage</li> </ol>
A.4	Training on Agronomic Practices, nursery management, planting techniques, nutrient and pest management, irrigation techniques, proper harvesting procedures etc.	<ol style="list-style-type: none"> <li>1. Different types of cropping options</li> <li>2. Seed treatment</li> <li>3. Nursery bed raising</li> <li>4. Sowing/Transplantation process</li> <li>5. Intercultural operations</li> <li>6. Pest management</li> <li>7. Harvesting and yield estimation</li> <li>8. FAQ management</li> <li>9. Bagging, Tagging and Storage</li> </ol>
A.5	Training of farmers on Farm mechanization, need for farm mechanization, constraints, economics of farm mechanization, practical uses of farm machinery for different crops and field demonstrations, instructions for maintenance and repair, feedback on different machineries etc.	<ol style="list-style-type: none"> <li>1. Different stages in crop management, post-harvest and processing</li> <li>2. Challenges in drudgery of different local crops.</li> <li>3. Different mechanisation options in crop management, post and processing</li> <li>4. Contextualization of mechanisation</li> <li>5. Hands on training on equipment</li> <li>6. Safety precautions</li> </ol>
A.6	Training for Farmer Producer Groups (Accounting, bookkeeping, Institutional Building, core values and teamwork, discussion on different	<ol style="list-style-type: none"> <li>1. legal compliances,</li> <li>2. record keeping,</li> <li>3. expenditure monitoring mechanism etc</li> </ol>

Sl. No.	Activities	Topic to be Covered
	schemes and potential new business model etc.)	
A.7	Training on Aggregation and Marketing (Training on FAQ, grading, packing, Quality control, storage techniques, issues and challenges, marketing strategies, exploring new markets etc.)	<ol style="list-style-type: none"> <li>1. Aggregation</li> <li>2. Grading</li> <li>3. Packing &amp; Branding</li> <li>4. Market linkage</li> <li>5. Quality control</li> <li>6. Storage techniques etc.</li> </ol>
<b>B</b>	<b>5 Day Exposure Visits within State for 30 Farmers @ Rs 400/- per farmer per day</b>	
B.1	Exposure Visit on Improved agronomic practices, multi cropping systems, Farm Mechanization (application of farm machineries)	<ol style="list-style-type: none"> <li>1. Model Farm,</li> <li>2. Model nursery</li> <li>3. Best multi cropping fields.</li> <li>4. Farm mechanisation in the fields.</li> <li>5. The process and benefit of multi cropping systems</li> <li>6. Challenges of Multi Cropping System.</li> </ol>
B.2	Exposure Visit of Farm Producer Groups on institutional management, aggregation, grading, packing and marketing etc	<ol style="list-style-type: none"> <li>1. Aggregation</li> <li>2. Grading</li> <li>3. Packing &amp; Branding</li> <li>4. Market linkage</li> </ol>
B.3	Exposure Visit on NTFP, processing and value addition units	<ol style="list-style-type: none"> <li>1. Processing</li> <li>2. Value addition</li> <li>3. Packaging</li> <li>4. Marketing</li> <li>5. Branding</li> </ol>
<b>C</b>	<b>4 Day Awareness campaign at cluster level @Rs 20000/- per campaign</b>	
C.1	Campaigns in GPs to increase awareness on household consumption and procurement. Each Campaign will be for 4 days (2 Campaigns per year)	<ol style="list-style-type: none"> <li>1. Campaign shall be organised to make awareness among the farmers for increase in household consumption of value-added products or processed products of the different crops.</li> <li>2. Nutritional value and health benefits of different value-added products.</li> <li>3. Recipe preparation and value addition.</li> </ol>
<b>D</b>	<b>1 Day GP Level Non-Residential Trainings for 20 farmers @ Rs 250/- per farmer</b>	
D.1	Training and Capacity Building on Crop Water Budgeting, Protective Irrigation and Water Management	<ol style="list-style-type: none"> <li>1. Water use efficiency</li> <li>2. Investment in water</li> <li>3. Water budget</li> <li>4. Protective irrigation</li> <li>5. Water management</li> </ol>
D.2	Training on Seed Production, Benefits and characteristics of quality seed,	<ol style="list-style-type: none"> <li>1. Seed production protocols</li> <li>2. Characteristics of quality seeds</li> </ol>

Sl. No.	Activities	Topic to be Covered
	classes of quality seed, seed standard FAQ, Quality seed production techniques, Seed Treatment and seed preservation techniques	<ol style="list-style-type: none"> <li>3. Seed production technology</li> <li>4. Seed treatment protocols</li> <li>5. Seed conservation technology</li> </ol>
D.3	Training on Crop Diversification, need for crop diversification, difference between monoculture and multiple cropping, techniques in different multi-cropping models, benefits of crop diversification	<ol style="list-style-type: none"> <li>1. Different types of cropping options</li> <li>2. Seed treatment</li> <li>3. Sowing/Transplantation process</li> <li>4. Intercultural operations</li> <li>5. Pest management</li> </ol>
D.4	Training on Organic Manure/Organic Pesticide Preparation, field demonstration, application techniques for different crops according to the crop calendar	<ol style="list-style-type: none"> <li>1. Preparation of different types of bio inputs <ol style="list-style-type: none"> <li>a. <i>Handikhata</i></li> <li>b. <i>Jibamruta</i></li> <li>c. <i>Nimastra</i></li> <li>d. <i>Panchagabya</i></li> <li>e. <i>Bramhastra</i></li> <li>f. <i>Agniastra</i></li> </ol> </li> <li>2. Application procedures</li> <li>3. Business development programmes</li> <li>4. Packaging, Marketing and Branding</li> </ol>
D.5	Training Women farmers on Farm Mechanization, need for farm mechanization, constraints, economics of farm mechanization, practical uses of farm machinery for different crops and field demonstrations, instructions for maintenance, feedbacks on different machineries	<ol style="list-style-type: none"> <li>1. Farm equipment's</li> <li>2. Practical use of farm equipment's</li> <li>3. Demonstration in field</li> <li>4. Maintenance of the equipment's</li> </ol>

## HORTICULTURE

<b>A</b>	<b>CAPACITY BUILDING (50% of the participants in all trainings shall be women)</b>	
	<b>2 Day Cluster Level Residential Trainings for 30 Farmers @ Rs 400/- per farmer/day</b>	
A.1	Training and Capacity Building on PoP related to Vegetable Cultivation for progressive farmers and staff.	<ol style="list-style-type: none"> <li>1. Crop Planning</li> <li>2. Seed Selection</li> <li>3. Organic fertilizer</li> <li>4. Nutrient Management</li> <li>5. Pest &amp; Diseases Management</li> <li>6. Safe Harvest Methods</li> <li>7. Storage</li> </ol>
A.2	Training on organic farming and preparation of bio pesticides and bio fertilizers.	<ol style="list-style-type: none"> <li>1. Soil Fertility and Soil Treatment</li> <li>2. Preparation of Bio Fertilizer (Azospirillum, Azotobacter, PSB etc )</li> </ol>

Sl. No.	Activities	Topic to be Covered
		<ol style="list-style-type: none"> <li>3. Compost pit, FYM, Vermi compost BGA, <i>Azolla</i> etc.</li> <li>4. Preparation of Organic Liquid Manure Handikhat, Jibamruta, Ghan bijamrutetc</li> <li>5. Stocking and its Use</li> </ol>
A.3	Training on Polynet Nursery Management	<ol style="list-style-type: none"> <li>1. Management of nursery, (Land preparation, Bed preparation, Sapling development &amp; treatment, Packing)</li> <li>2. Grafting</li> <li>3. Sapling Produce Calendar</li> <li>4. Sapling BDP</li> </ol>
A.4	Training on Aggregation, Grading , Packing , Processing and Marketing of vegetables and fruits.	<ol style="list-style-type: none"> <li>1. Production Calendar</li> <li>2. Aggregation</li> <li>3. Grading</li> <li>4. Packing &amp; Branding</li> <li>5. Market linkage</li> <li>6. BDP</li> </ol>
<b>B</b>	<b>Exposure Visits within State for 30 Farmers for 5 days @ Rs 400/- per day</b>	
B.1	Exposure Visit on Vegetable Cultivation Practices (Trellis, etc)	<ol style="list-style-type: none"> <li>1. Trellis</li> <li>2. Machan Model</li> <li>3. Vegetable Cultivation through Sprinkler, Drip, etc</li> <li>4. Vegetable production through mulching</li> <li>5. Pest and Diseases Management</li> <li>6. Storage and Marketing</li> </ol>
B.2	Exposure Visit for women farmers on preparation of Value-added products and marketing	<ol style="list-style-type: none"> <li>1. Sauce (Tomato&amp; Chilli)</li> <li>2. Pickles making of Chilli, Mango, Lemon, mix,</li> <li>3. Dal processing</li> <li>4. Spices Making</li> <li>5. Powder Making</li> <li>6. Drumstick Leaf processing</li> <li>7. Marketing Strategy</li> </ol>
B.3	Exposure Visit on NTFP and Horticulture product, Aggregation, Grading, Packing and Marketing	<ol style="list-style-type: none"> <li>1. Aggregation</li> <li>2. Grading</li> <li>3. Packing &amp; Branding</li> <li>4. Market linkage</li> </ol>
B.4	Exposure Visit on Organic and NPM Vegetable Cultivation and Polynet Nurseries	<ol style="list-style-type: none"> <li>1. Intercropping Methods</li> <li>2. Crop Combination</li> <li>3. Crop Rotation</li> <li>4. Cultural practices</li> <li>5. Physical Pest Control</li> </ol>

Sl. No.	Activities	Topic to be Covered
		6. Trap Methods 7. Seed Treatment through Organic Way
<b>C</b>	<b>1-day Non-Residential GP Level Trainings for 20 farmers @ Rs 250/- per farmer per day</b>	
C.1	Training and Capacity Building on Vegetable Cultivation with focus on women farmers	1. Analysis of nutrition access of Woman 2. list of nutritional value of vegetables 3. Vegetable Produces 4. Crop Calendar as per nutritional Value
C.2	Training and Capacity Building on Drip Irrigation and Sprinkler Irrigation, water Management and rainwater harvesting structure.	1. Models of irrigation infrastructure 2. Drip Irrigation 3. Sprinkler Irrigation, (Portable, Semiportable, Mini, Micro, Etc) 4. Rain Gun Irrigation 5. Rainwater harvesting Structure (different model of Tanks)
C.3	Training on agronomic practices and preparation of bio pesticides and bio fertilizers with focus on women entrepreneurship.	1. Preparation of different organic manure 2. Bijamruta, 3. Jeevamrutha, 4. HaandiKhata, 5. Nimastra, etc
C.4	Training on Concept & Management of AdarashBagicha (Agroforestry, Multi-cropping, water conservation, organic application, land utilization).	1. Agroforestry model 2. Multi layer farming 3. Convergence 4. Applying process 5. Execution 6. Benefits
C.5	Training on Aggregation and vegetable related enterprises	1. Sauce (Tomato & Chilli) 2. Pickles making of Chilli, Mango, Lemon, mix 3. Dal processing 4. Species Making 5. Powder Making 6. Drumstick leaf processing
C.6	Training to the farmers on Farm mechanization and utilization, selection, operation, repair & maintenance of farm tools.	1. Farm equipment's 2. Practical use of farm equipment's 3. Demonstration in field 4. Maintenance of the equipment's
<b>LIVESTOCK</b>		
<b>A CAPACITY BUILDING (50% of the participants in all trainings shall be women)</b>		
	<b>2 Day Cluster Level Residential Trainings for 25 farmers @ Rs 400/-per farmer per day</b>	

Sl. No.	Activities	Topic to be Covered
A.1	2 Day Residential Training at cluster level for 20 Vaccinators/women para workers/ staffs on different diseases, vaccination schedule, proper practices. @400/- per day	<ol style="list-style-type: none"> <li>1. Statusof Vaccination</li> <li>2. Seasonal Diseases</li> <li>3. Vaccination Calendar</li> <li>4. Traditional Knowledge and skill .</li> </ol>
A.2	4 days Awareness and Vaccination campaign for vaccination @Rs 20000/- per campaign @ 2 per year	<ol style="list-style-type: none"> <li>1. Livestock Seasonal Diseases and Its Vaccination</li> <li>2. Demonstration on local available herbal treatments</li> <li>3. Supplementary Feeding Practices</li> </ol>
A.3	Training and Capacity Building of Goat Scouts and Progressive Farmers on vaccination and disease prevention	<ol style="list-style-type: none"> <li>1. Season wise Diseases and Vaccination of Department</li> <li>2. Demonstration on local available herbal treatments</li> <li>3. Local treatment of Goat pox,</li> </ol>
A.4	Two days Awareness Campaign on BYP management	<ol style="list-style-type: none"> <li>1. Awareness through Miking,Rath , Path yatra on Desi poultry management and vaccination</li> </ol>
A.5	2 days residential training of Farm Entrepreneurs for 20 participants on PoP, cost benefit analysis, maintenance of breed farm, feed management, marketing strategies etc. 2 trainings per year @ 400/- per day	<ol style="list-style-type: none"> <li>1. Desi Breed Farm</li> <li>2. Feed Management</li> <li>3. Intercropping</li> <li>4. Flock Management</li> <li>5. Diseases and prevention methods</li> <li>6. Vaccination</li> <li>7. Marketing</li> </ol>
<b>B</b>	<b>1 Day GP Level Non-Residential Trainings for 20 farmers @ Rs 250/- per farmer</b>	
B.1	Training and Capacity Building on vaccination and disease control	<ol style="list-style-type: none"> <li>1. Statusof Vaccination</li> <li>2. Seasonal Diseases</li> <li>3. Vaccination Calendar</li> <li>4. Traditional Knowledge and skill</li> </ol>
B.2	Training and Capacity Building on Rearer Field School, Management of livestock	<ol style="list-style-type: none"> <li>1. Rearers Association</li> <li>2. Observation</li> <li>3. Sharing of observation and knowledge</li> <li>4. Reporting</li> <li>5. Vaccination</li> </ol>
B.3	Training of 20 Vaccinators on vaccination schedule, management practices during vaccination, prevention and control of poultry diseases etc. 1 training per year @250 per day per vaccinator	<ol style="list-style-type: none"> <li>1. Cold Chain Management</li> <li>2. Vaccination Schedule</li> <li>3. Seasonal Vaccination Calendar</li> <li>4. Preparation of Indent and Submission</li> <li>5. Vaccine Source</li> <li>6. Data management</li> </ol>

Sl. No.	Activities	Topic to be Covered
<b>C</b>	<b>Exposure Visit (Within State)</b>	
C.1	Exposure visits on Management of Breed Farm	<ol style="list-style-type: none"> <li>1. Model Desi Breed Farm visit</li> <li>2. Feed Management</li> <li>3. Forage area management</li> <li>4. Flock Management</li> <li>5. Vaccination</li> <li>6. Income and Threats</li> </ol>
<b>FISHERY</b>		
<b>A</b>	<b>CAPACITY BUILDING (50% of the participants in all trainings shall be women)</b>	
	<b>1 Day Non-Residential Training for 20 Farmers @Rs 250/- per farmer per day</b>	
A.1	Training on Pond treatment/pond conditioning fertilizing and Feed Supplementation.	<ol style="list-style-type: none"> <li>1. Stocking of Fingerling/ Yearling</li> <li>2. Improving Water level</li> <li>3. Maintaining pH value</li> <li>4. lime application</li> <li>5. Weed Management</li> </ol>
A.2	Trial netting, fish disease prevention and treatment and data generation of growth for calibration of technical packages.	<ol style="list-style-type: none"> <li>1. Regular Netting and measure growth</li> <li>2. Maintained Data</li> <li>3. Measure growth</li> </ol>
A.3	Fish-Farmer Field schools at Demo sites (1 events / year) Rs 250/- per farmer for 20 farmers (Practical training on aquaculture).	<ol style="list-style-type: none"> <li>1. Farmers share experienced</li> <li>2. Stocking details,</li> <li>3. Feeding Practices</li> <li>4. Growth monitoring</li> <li>5. Income and Expenditure</li> <li>6. Data Management</li> </ol>
A.4	Training on processes for fish-harvesting (1 Day Non-Residential Training for 20 Farmers @Rs 250 per farmer per day).	<ol style="list-style-type: none"> <li>1. Process of Fish Harvesting</li> <li>2. Counting of Fish as per Species</li> <li>3. Measure the growth of species during harvest</li> <li>4. Maintenance of Records</li> <li>5. Analysis expenditure and Income</li> </ol>
A.5	Training for entrepreneurs on grading, sorting, live fish storage & transportation and value addition & utilization of fish wastes. (1 Day Non-Residential Training for 20 Farmers @Rs 250/- per farmer per day)	<ol style="list-style-type: none"> <li>1. Basics of fish cold storage</li> <li>2. Field level techniques</li> <li>3. Types of fish value addition</li> <li>4. Demonstration of value addition</li> </ol>
<b>B</b>	<b>2 Day Residential Training for 25 Farmers @Rs 400/- per farmer per day</b>	
B.1	Orientation of staffs and progressive farmers on aquaculture and PoP of fish farming.	<ol style="list-style-type: none"> <li>1. Current practices of fish Farming</li> <li>2. Local available Fish Species and Farming</li> </ol>

Sl. No.	Activities	Topic to be Covered
		<ol style="list-style-type: none"> <li>3. Pre-preparation</li> <li>4. stocking management</li> <li>5. Feeding</li> <li>6. pH/Plankton testing</li> <li>7. Growth measurement</li> </ol>
B.2	Training of staffs and Progressive farmers on different Institutions and information, communication & extension.	<ol style="list-style-type: none"> <li>1. Process of Convergence</li> <li>2. MIS of Programme</li> </ol>
B.3	Training of leaders of FPOs on Fish value chains and marketing.	<ol style="list-style-type: none"> <li>1. Value Addition of Fish and Marketing</li> </ol>
B.4	Training of Community Resource Persons and progressive farmers on different thematic related to PoP in aqua farming.	<ol style="list-style-type: none"> <li>1. Fish + Duckery</li> <li>2. Fish + Goat</li> <li>3. Fish + poultry</li> </ol>
B.5	Training on Mobile Application	<ol style="list-style-type: none"> <li>1. Orientation on Use of application and Data Collection</li> </ol>
E.	Centralised Capacity Building-SPA	<ol style="list-style-type: none"> <li>1. Crop Water Budgeting, Protective irrigation Model</li> <li>2. Seed systems/farm mechanisation</li> <li>3. Integration Farming model</li> <li>4. PoP for different crops/Fodder/Fisheries</li> <li>5. Organic farming/Organic certification</li> <li>6. Trellis cultivation/Agroforestry/</li> <li>7. Market/Business Development of different thematic component</li> <li>8. Procurement and Quality Control Breed Characterization</li> <li>9. Livestock healthcare/ Breed registration/ Breed conservation</li> <li>10. BYP Management</li> <li>11. MIS and Mobile Application</li> <li>12. Any other need-based activity</li> </ol>
F.	Centralized coordination meetings and learning events and Documentation-SPA	<ol style="list-style-type: none"> <li>1. Review Meetings (Within SPA, DPMU level and SPMU level)</li> <li>2. Convergence &amp; Planning Meetings</li> <li>3. Coordination and partnership development meetings</li> <li>4. Learning events</li> <li>5. Field level documentation through internships/fellowships/write shops</li> </ol>

## Annexure-1 Cost Structure of WSHG

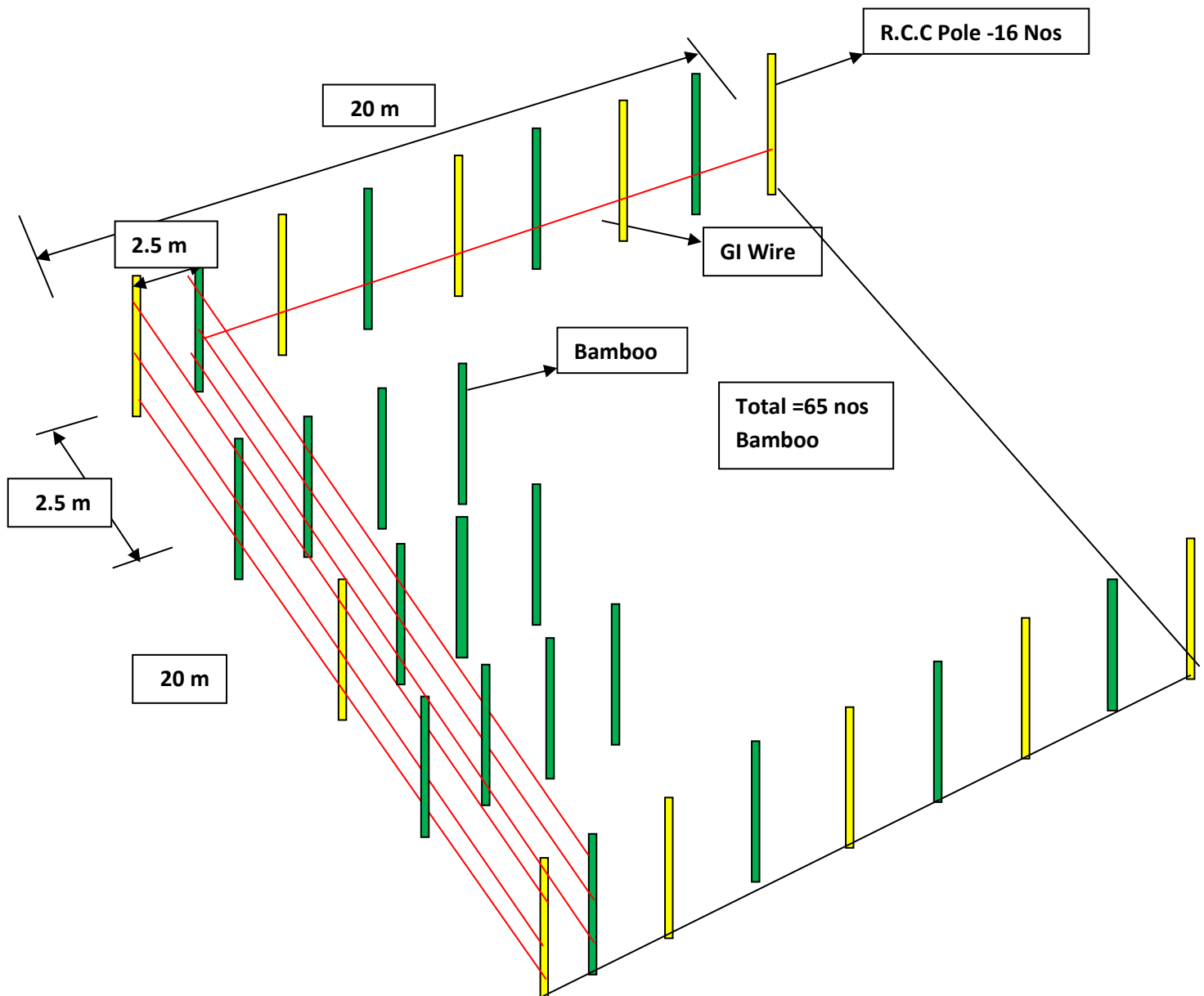
SL	Activities	Rate per day	Engagement per Month	Amount	Total Village Covered in Cluster	Total Amount per Year per Cluster
1	Selection of Farmers for different Activities at the Village level and collect User fees etc	355	4	1420	70	0.994
2	Arrangement of the Programme ( Meeting ,Training, Awareness, Vaccination Camp etc)	400	5	2000	70	1.4
3	Preparation of Indent of Seeds, CHC Equipment's, Processing units, etc)	355	1	355	70	0.2485
4	Follow up Work for Construction of Shelters/ Irrigation/ Trellis, Adrasha Bagicha Etc	355	5	1775	70	1.2425
	<b>Total Cost</b>		<b>15</b>	<b>5550</b>	<b>280</b>	<b>3.88500</b>

## Annexure-2 Cost Structure of Facilitating Agency

Sl. No.	Details	Month	Amount per Month	1st Year Budget (Rs in Lakhs)
1	Chief Functionary/ Representative	1	5000	0.60
2	Prog. Co-ordinator (Agriculture & Horticulture)	1	25000	3.00
3	Prog. Co-ordinator (Fishery & livestock)	1	25000	3.00
	<b>Office Administration Cost</b>			
5	Office Rent	1	3000	0.36
6	Communication (Telephone & Internet)	1	2500	0.30
7	Office maintenance & stationery and printing	1	2500	0.30
8	Review Meeting (Including TA of CRPs)	1	2500	0.30
9	TA of ( Part time CEO & 2 Prog. Co-ordinators)	1	9000	1.08
10	Audit cost of FA	1	10000	0.10
	<b>Total Cost</b>		<b>84500</b>	<b>9.04</b>

## Annexure – 3 Draft Estimate & Design of Single Line Trellis

Trellis Design: - 0.10 Acre (10 cent)



## ESTIMATE FOR 10 CENT (400 SQM ) TRELLIES

SL NO	Description of Item	Quantity	Unit	Rate	Amount	Programme share	Beneficiary Contribution
1	Earth work excavation in hard soil or, gravelly soil within 50m initial lead and 1.5 m lift with breaking clods to maximum 5cm to 10cm and laying in layers not exceeding 0.3 m depth as per direction of engineer in charge.	1.46	cum	176.48	257.66	257.66	
2	Bamboo 1st class 7cm to 10cm dia including sawing , shapping , fittings and fixing	139.10	RM	24.05	3345.36	3345.36	
3	Placing of R.C.C Poles at a distance of 2.5mtr as per the diagram.	34.24	RM	192.67	6597.02	6597.02	
4	GI Wire of 14 gauge ( 1 lines of 20 m plus slants i.e. 20 +2.5 m =22.5 m each @ 9 Nos of Line and total of 202 .50 m = 30.3 kg @ 30m/kg)	6.75	KG	85.00	573.75	573.75	
5	Agriculture thick(1.7-3mm) thick green PET Plastic wire (4 Lines ) to support vegetable	846.00	RM	1.75	1480.5	1480.50	
6	Cost of supervision charges, miscellaneous & unforeseen items etc @2% of project cost			295.49	295.49	295.49	
7	Installation of Bamboo and RCC Poles @ 5MD		LS	1575.00	1575.00		1575.00
8	Installation of GI Wire of 14 gauge		LS	945.00	945.00		945.00
					<b>15069.78</b>	<b>12549.78</b>	<b>2520.00</b>
				<b>Or say</b>	<b>15070.00</b>	<b>12550.00</b>	<b>2520</b>

## ESTIMATE FOR 10 CENT (400 SQM ) TRELLIES

SI No	Description of the work	No	Length	Breadth	Height	Quantity	Unit	Rate	Amount
1	Earth work excavation in hard soil or, gravelly soil within 50m initial lead and 1.5 m lift with breaking clods to maximum 5cm to 10cm and laying in layers not exceeding 0.3 m depth as per direction of engineer in charge.								
	Excavation for Bamboo Pole	81	0.2	0.2	0.45	1.46	cum		
					<b>Total</b>	<b>1.46</b>	<b>cum</b>	176.48	257.66
2	Bamboo 1st class 7cm to 10cm dia including sawing , shapping , fittings and fixing	65	Nos		2.14	139.10	RM	24.05	3345.36
3	Placing of R.C.C Poles at a distance of 2.5mtr as per the diagram.	16	Nos		2.14	34.24	RM	192.67	6597.02
4	GI Wire of 14 gauge ( 1 lines of 20 m plus slants i.e. 20 +2.5 m =22.5 m each @ 9 Nos of Line and total of 202 .50 m = 30.3 kg @ 30m/kg)					6.75	KG	85	573.75
5	Agriculture thick(1.7-3mm) thick green PET Plastic wire (4 Lines ) to support vegetable					846.00	RM	1.75	1480.50
6	Installation of Bamboo and RCC Poles @ 5MD						LS	1575.00	1575.00
7	Installation of GI Wire of 14 gauge						LS	945.00	945.00
8	Cost oF miscellaneous, unforeseen item & price escalation etc @2% of project cost								295.49
								<b>TOTAL</b>	<b>15069.78</b>
								<b>Or say</b>	<b>15070.00</b>

## ANALYSIS OF RATES

Sl.No.	Description	Quantity	Unit	Rate	Amount	
1	2	3	4	5	6	7
1	Earth in excavation in foundation of all kinds of soils within 50m initial lead and 1.5m initial lift , levelling the bed & breaking clods mim. 5cm to 7cm up to 0.30m in depth etc. complete.(100 Cum)					
	Data for 100 cum					
	a Hard soil:					
	Man mulia	21.50	nos	315.00	Rs	6772.50
	Woman mulia	21.50	nos	315.00	Rs	6772.50
				Total	Rs	13545.00
	Overhead charges	7.50%				1015.88
				Sub Total		14560.88
	Excavation of foundation	20%			Rs	2912.18
				Total		17473.06
					Rs	17473.06
	Labour cess	1%				174.73
				Grand Total		17647.79
						176.48
2	Filling foundation and plinth with excavated materials including watering & ramming					
	2/3rd rate of respective works					
	for hard soil,				Rs	9707.25
	Overhead charges	7.50%				728.04
				Total		10435.29
	Labour cess	1.00%				104.35
						10539.64
				Grand Total	Rs	105.40
3	Bamboo 1st class 7cm to 10cm dia including sawing , shapping , fittings and fixing					
			@Rs			
	Material					
a	Bamboo 1st class ( 1R M)	1	Nos	21.72		21.72
b	2% sawing, shapping, fitting & fixing etc.on					0.43
	Overhead charges	7.50%				1.66
				Total		23.81
	Labour cess	1%				0.24
				Grand Total		24.05
						RM



